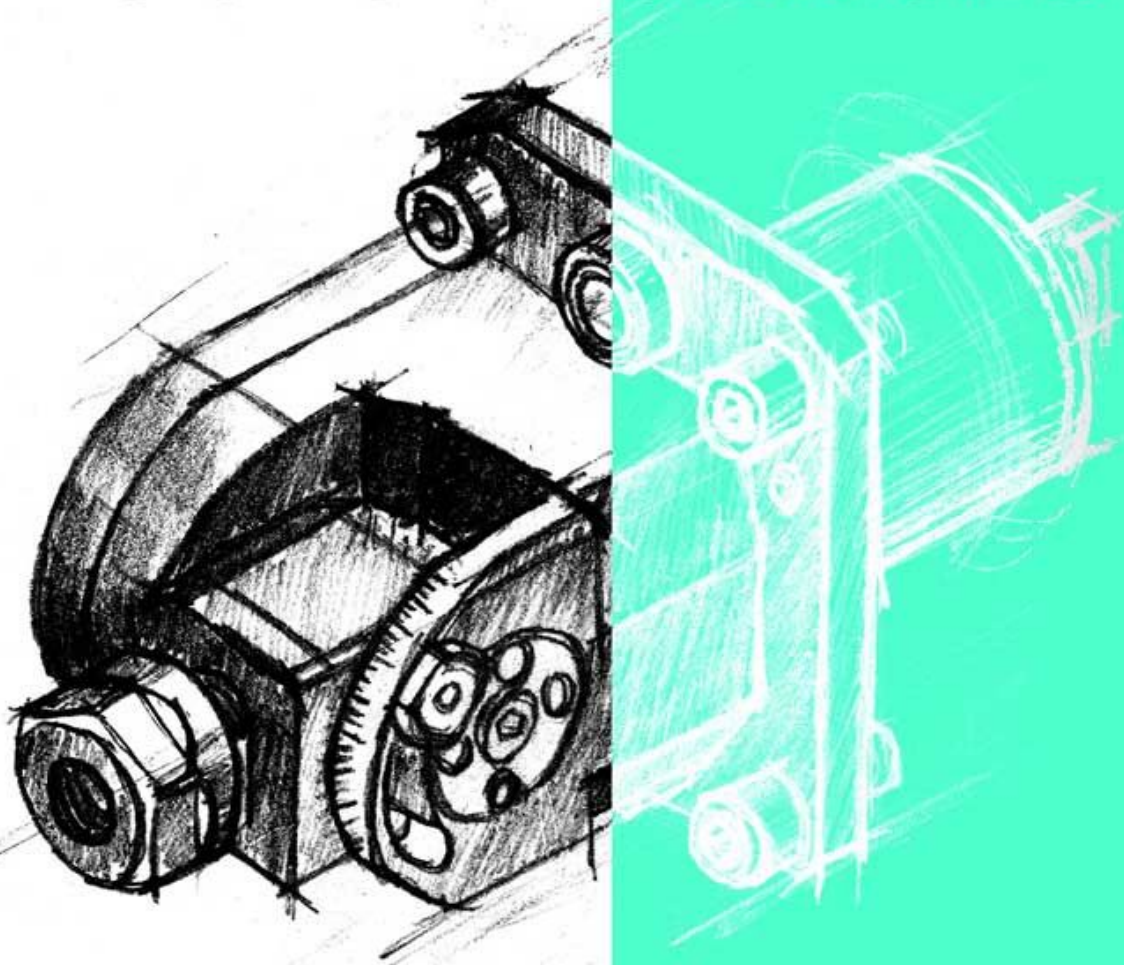


HN·NC TOOLS TECHNOLOGY



**2016.06
NO.09**

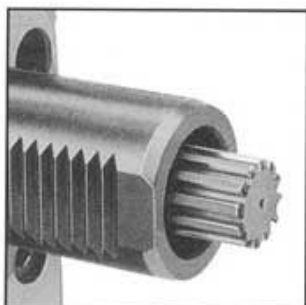


HEINER PRECISION MACHINERY CO., LTD



www.nc360.net

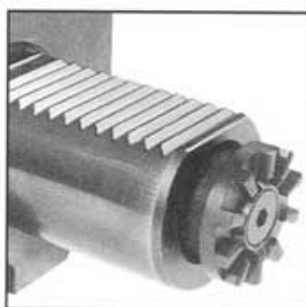
COMMON DRIVE COUPLINGS FOR LIVE VDI TOOLS



Coupling to DIN 5482



Coupling to DIN 5480



IT Coupling



Coupling bevel gear

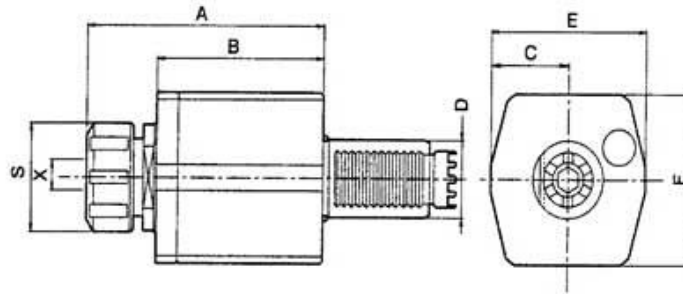


Coupling to DIN 1809



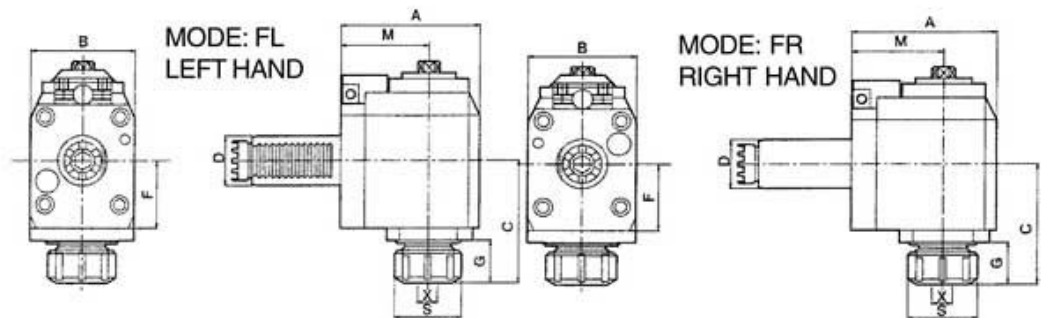
MT (Baruffaldi type)

Uses ER collets
 External coolant supply
 Collet is not included



EA PART NUMBER	D ØH Ø9000	X CAPACITY		S	MAX RPM	i	A	B	C	E	F
VDIDA30-IT-ER25	30	1-16	ER25	42	6000	1:1	86	55	33	66	66
VDIDA40-IT-ER32	40	2-20	ER32	50	6000	1:1	89	55	39	79	78
VDIDA50-IT-ER40	50	3-26	ER40	63	6000	1:1	123	81.5	40	84	88

AXIAL TENSION COMPRESSION TAPPING HEADS ALSO AVAILABLE.

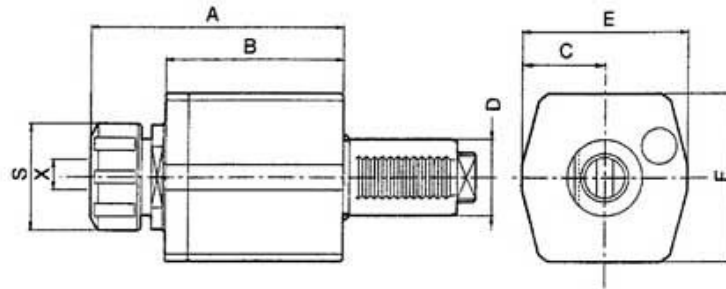


EA PART NUMBER	D ØH Ø9000	X CAPACITY		S	MAX RPM	i	A	B	C	F	G	M
VDIFR30-IT2565	30	1-16	ER25	42	5000	1:1	97	64	74.5	41	26	65
VDIFL30-IT2565												
VDIFR30-IT2585	30	1-16	ER25	42	5000	1:1	117	64	74.5	41	26	85
VDIFL30-IT2585												
VDIFR40-IT3265	40	2-20	ER32	50	5000	1:1	99	80	71	40	23	65
VDIFL40-IT3265												
VDIFR40-IT3285	40	2-20	ER32	50	5000	1:1	119	80	71	40	23	85
VDIFL40-IT3285												
VDIFR40-IT32100	40	2-20	ER32	50	5000	1:1	134	80	71	40	23	100
VDIFL40-IT32100												
VDIFR50-IT4075	50	3-26	ER40	60	5000	1:1	115	88	103	56	40	75
VDIFL50-IT4075												

NOTE: OUTPUT ROTATION IS OPPOSITE INPUT ROTATION.
 RADIAL TENSION COMPRESSION TAPPING HEADS ALSO AVAILABLE.

AXIAL DRILLING AND MILLING HEAD WITH DIN 1809 DRIVE COUPLING

- Uses ER collets
- External coolant supply
- Collet is not included



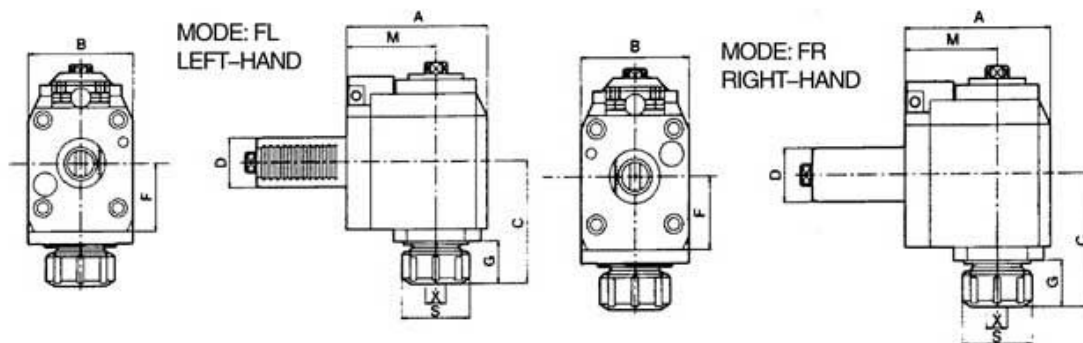
COUPLING TO DIN 1809

EA PART NUMBER	D DIN 61800	X CAPACITY		S	MAX. RPM	i	A	B	C	E	F
VDIDA20-1809-ER16	20	1-10	ER16	32	6000	1:1	76	48	25	50	50
VDIDA30-1809-ER25	30	1-16	ER25	42	6000	1:1	101	70	33	66	66
VDIDA40-1809-ER32	40	2-20	ER32	50	6000	1:1	89	55	39	79	78
VDIDA50-1809-ER40	50	3-36	ER40	62	6000	1:1	128	85	40	84	88
VDIDA60-1809-ER50	60	10-34	ER50	78	6000	1:1	154	98	52	104	104

AXIAL TENSION COMPRESSION TAPPING HEADS ALSO AVAILABLE.

RADIAL DRILLING AND MILLING HEAD WITH DIN 1809 DRIVE COUPLING

- Uses ER collets
- External coolant supply
- Collet is not included



EA PART NUMBER	D DIN 61800	X CAPACITY		S	MAX. RPM	i	A	B	C	F	G	M
VDI FR30-1809-2555	30	1-16	ER25	42	5000	1:1	87	64	74.5	41	26	55
VDI FL30-1809-2555												
VDI FR40-1809-3265	40	2-20	ER32	50	5000	1:1	99	80	71	40	23	65
VDI FL40-1809-3265												
VDI FR50-1809-4075	50	3-26	ER40	63	5000	1:1	115	88	103	56	40	75
VDI FL50-1809-4075												

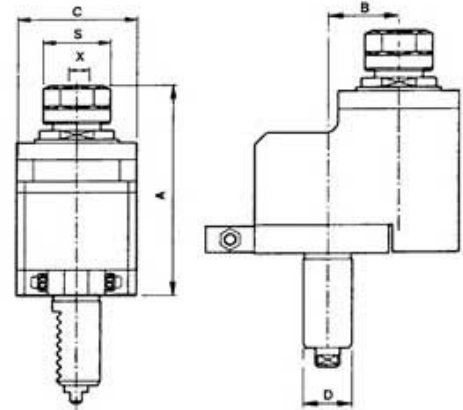
NOTE: OUTPUT ROTATION IS OPPOSITE INPUT ROTATION.
 RADIAL TENSION COMPRESSION TAPPING HEADS ALSO AVAILABLE.

OFFSET AXIAL DRILLING AND MILLING HEAD WITH DIN 1809 DRIVE COUPLING

Uses ER collets
 External coolant supply
 Collet is not included

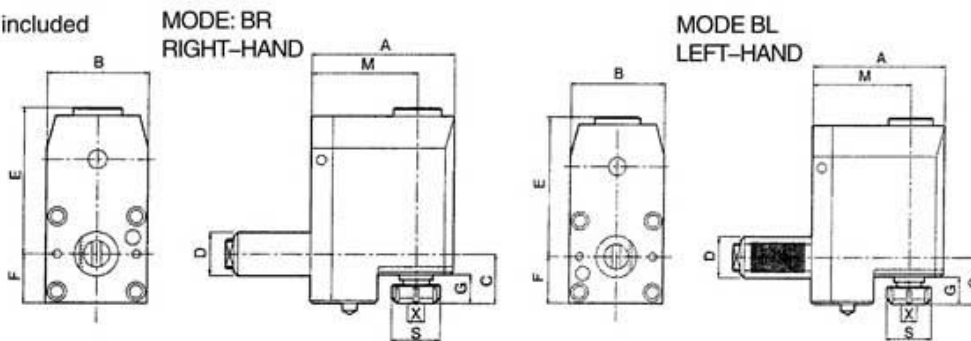
EA PART NUMBER	D DIN 09800	X CAPACITY		S	MAX RPM	I	A	B	C
VDI DA20-1809-1629	20	1-10	ER16	32	4000	1:1	93.5	29	50
VDI DA30-1809-2529	30	1-16	ER25	42	4000	1:1	100	29	60
VDI DA30-1809-2529/1	30	1-16	ER25	42	8000	1:2	100	29	60
VDI DA40-1809-3250	40	2-20	ER32	50	4000	1:1	113	50	80
VDI DA50-1809-4065	50	3-26	ER40	63	3000	1:1	124	65	80

NOTE: OUTPUT ROTATION IS OPPOSITE INPUT ROTATION.



OFFSET RADIAL DRILLING AND MILLING HEAD WITH DIN 1809 DRIVE COUPLING

Uses ER collets
 External coolant supply
 Collet is not included



EA PART NUMBER	D DIN 09800	X CAPACITY		S	MAX. RPM	I	A	B	C	E	F	G	M
VDI BR20-1809-1657	20	1-10	ER16	32	5000	1:1	80	50	43	62.5	27	28.5	57
VDI BL20-1809-1657													
VDI BR30-1809-2569	30	1-16	ER25	42	5000	1:1	95	60	41.5	75.5	31.5	29	69
VDI BL30-1809-2569													
VDI BR40-1809-3290	40	2-20	ER32	50	5000	1:1	124	80	44	110	42	34	90
VDI BL40-1809-3290													
VDI BR50-1809-4090	50	3-26	ER40	62	5000	1:1	129	86	49	112	45	39	90
VDI BL50-1809-4090													
VDI BR60-1809-50102	60	10-34	ER50	78	5000	1:1	147	104	83	118	54	42	102
VDI BL60-1809-50102													

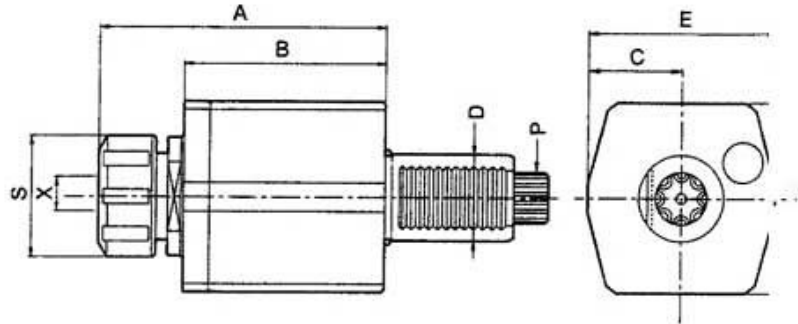
OFFSET RADIAL TENSION COMPRESSION MILLING HEAD ALSO AVAILABLE.

AXIAL DRILLING AND MILLING HEADS WITH DIN 5482 DRIVE COUPLER

Uses ER collets

External coolant supply

Collet is not included



EA PART NUMBER	D DIN 69880	X CAPACITY		S	MAX RPM	i	A	B	C	E	F	P DIN 5482
VDIDA30-5482-ER25	30	1-16	ER25	42	6000	1:1	101	70	33	66	66	B15X12
VDIDA40-5482-ER32	40	2-20	ER32	50	6000	1:1	89	55	39	79	78	B17X14
VDIDA50-5482-ER40	50	3-26	ER40	63	6000	1:1	128	85	40	84	88	B20X17
VDIDA60-5482-ER50	60	10-34	ER50	78	6000	1:1	154	98	52	104	104	B25X22

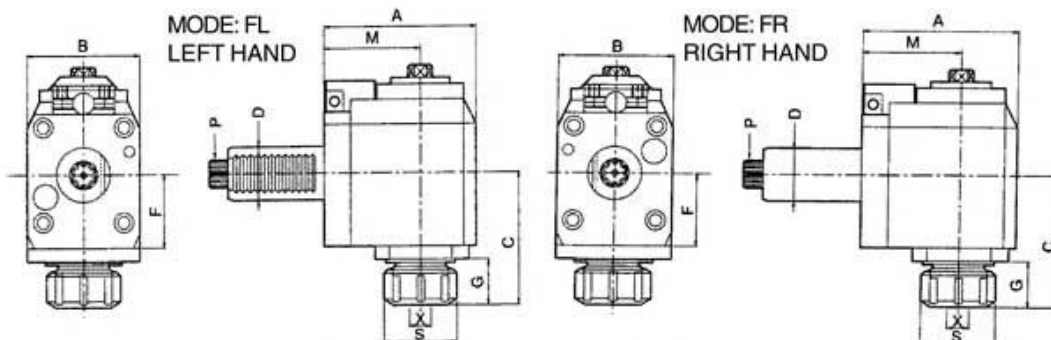
AXIAL TENSION COMPRESSION TAPPING HEADS ALSO AVAILABLE.

RADIAL DRILLING AND MILLING HEADS WITH DIN 5482 DRIVE COUPLER

Uses ER collets

External coolant supply

Collet is not included



EA PART NUMBER	D DIN 69880	X CAPACITY		S	MAX RPM	i	A	B	C	F	G	M	P DIN 5482
VDI FR30-5482-2565	30	1-16	ER25	42	5000	1:1	97	64	74.5	41	26	65	B15X12
VDI FL30-5482-2565													
VDI FR30-5482-2585	30	1-16	ER25	42	5000	1:1	117	64	74.5	41	26	85	B15X12
VDI FL30-5482-2585													
VDI FR40-5482-3265	40	2-20	ER32	50	5000	1:1	99	80	71	40	23	65	B17X14
VDI FL40-5482-3265													
VDI FR40-5482-3285	40	2-20	ER32	50	5000	1:1	119	80	71	40	23	85	B17X14
VDI FL40-5482-3285													
VDI FR50-5482-4075	50	3-26	ER40	63	5000	1:1	115	88	103	56	40	75	B20X22
VDI FL50-5482-4075													

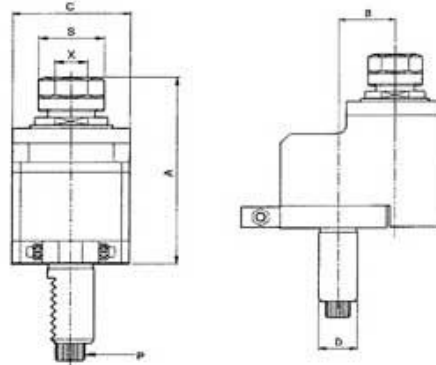
NOTE: OUTPUT ROTATION IS OPPOSITE INPUT ROTATION.
 RADIAL TENSION COMPRESSION TAPPING HEADS ALSO AVAILABLE.

OFFSET AXIAL DRILLING AND MILLING HEAD WITH DIN 5482 DRIVE COUPLING

Uses ER collets

External coolant supply

Collet is not included



EA PART NUMBER	D DIN 6380	X CAPACITY		S	MAX RPM	i	A	B	C	P DIN 5482
VDI DA30-5482-2529	30	1-16	ER25	42	4000	1:1	100	29	60	B15X12
VDI DA30-5482-2529/1	30	1-16	ER25	42	8000	1:2	100	29	60	B15X12
VDI DA40-5482-3250	40	2-20	ER32	50	4000	1:1	113	50	80	B17X14
VDI DA50-5482-4065	50	3-26	ER40	63	3000	1:1	124	65	86	B20X17

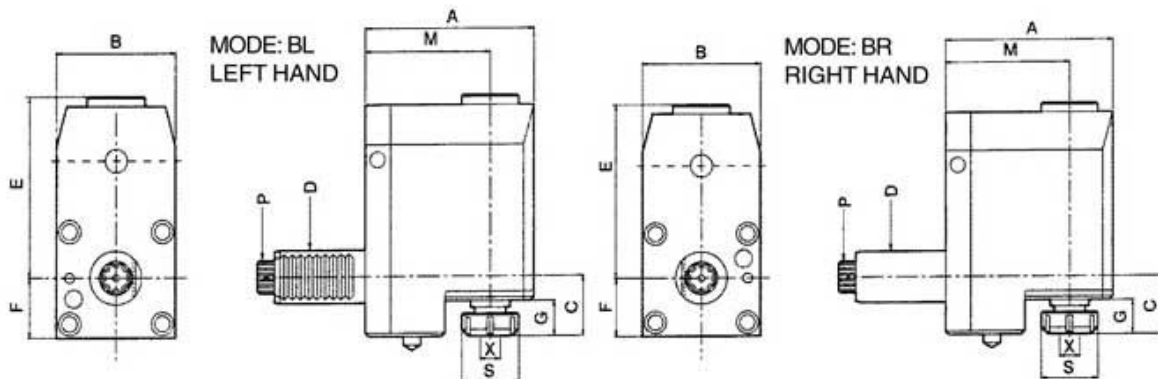
NOTE: OUTPUT ROTATION IS OPPOSITE INPUT ROTATION.

OFFSET RADIAL DRILLING AND MILLING HEAD WITH DIN 5482 DRIVE COUPLING

Uses ER collets

External coolant supply

Collet is not included



EA PART NUMBER	D DIN 6380	X CAPACITY		S	MAX RPM	i	A	B	C	E	F	G	M	P DIN 5482
VDI BR30-5482-2569	30	1-16	ER25	42	5000	1:1	95	60	42	75.5	31.5	28.5	69	B15X12
VDI BL30-5482-2569														
VDI BR40-5482-3290	40	2-20	ER32	50	5000	1:1	124	80	44	110	42	34	90	B17X14
VDI BL40-5482-3290														
VDI BR50-5482-4090	50	3-26	ER40	63	5000	1:1	129	86	49	112	45	39	90	B20X17
VDI BL50-5482-4090														
VDI BR60-5482-50102	60	10-34	ER50	78	5000	1:1	147	104	83	118	54	42	102	B25X22
VDI BL60-5482-50102														

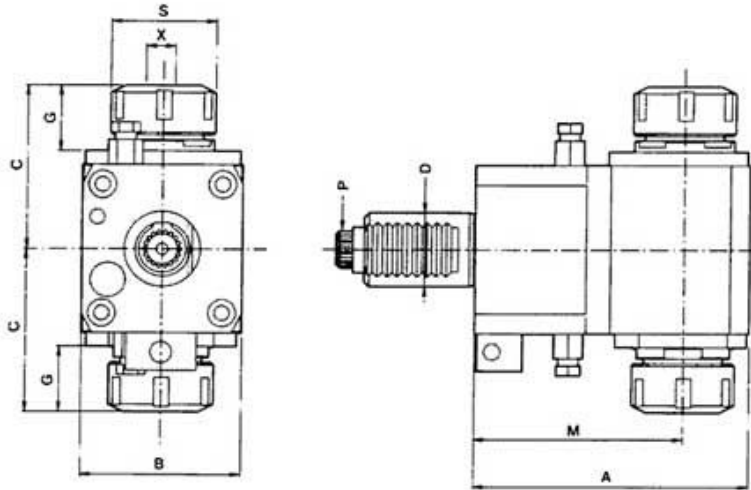
OFFSET RADIAL TENSION COMPRESSION TAPPING HEADS ALSO AVAILABLE.

DOUBLE COLLET RADIAL DRILLING AND MILLING HEAD WITH DIN 5480 DRIVE COUPLING

Uses ER collets

External coolant supply

Collet is not included



EA PART NUMBER	D DIN 69880	X CAPACITY		S	MAX RPM	I	A	B	C	G	M	P DIN 5480
VDI DF30-5480-2585D	30	1-16	ER25	42	4000	1:1	112	64	66	26.5	85	W16X0.8
VDI DF40-5480-3285D	40	2-20	ER32	42	4000	1:1	119	80	82	28	85	W20X0.8
VDI DF40-5480-32100D	40	2-20	ER32	50	4000	1:1	134	80	82	28	100	W20X0.8

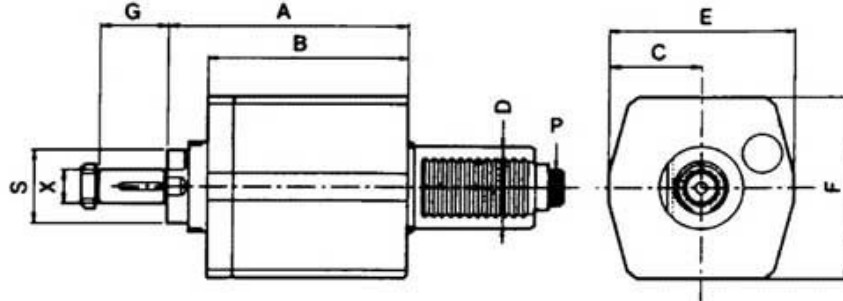
NOTE: ON ONE SIDE OF TOOL OUTPUT ROTATION IS THE SAME AS INPUT ROTATION, BUT ON THE OTHER SIDE, OUTPUT ROTATION IS OPPOSITE OF INPUT ROTATION.

AXIAL MILLING HEAD WITH DIN 5480 COUPLING

Uses ER collets

External coolant supply

Collet is not included



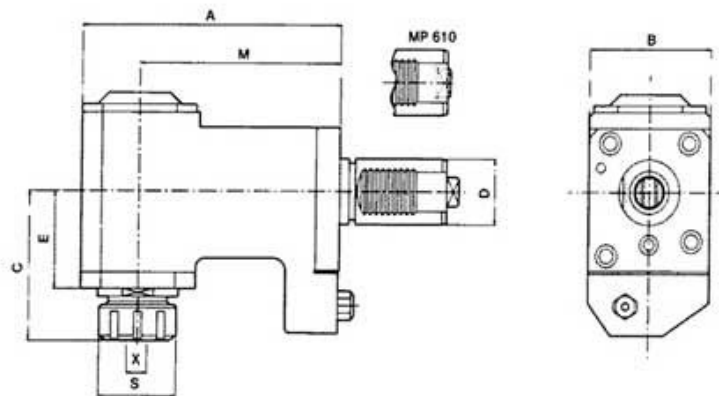
EA PART NUMBER	D DIN 69680	X DIN 6358	S	MAX RPM	i	A	B	C	E	F	G	P DIN 5480
VDI DA30-5480-16C	30	16	32	3000	1:1	91.5	70	33	66	66	27	W16X0.8
VDI DA40-5480-16C	40	16	32	3000	1:1	68.5	55	39	79	78	27	W20X0.8
VDI DA40-5480-22C	40	22	32	3000	1:1	68.5	55	39	79	78	31	W20X0.8

H TYPE MILLING AND DRILLING HEAD FOR MAZAK MULTIPLEX

Uses ER collets

External coolant supply

Collet is not included



EA PART NUMBER	MACHINE TYPE	MODELS	D	X CAPACITY	S	MAX RPM	A	B	C	E	M
VDI 5346800	MP410N-12D 415N-12D MP620-12D 6200-16D	MP 610	40	1-16 ER25	42	5000	152	75	90	60	115
VDI 5347600	MP420N-12D 620N-12D MP620-12D 6200-16D	MP 620	40	1-16 ER25	42	5000	167	80	90	60	130
VDI 5347632	MP420N-12D 620N-12D MP620-12D 6200-16D		40	2-20 ER32	50	5000	167	80	92	60	130

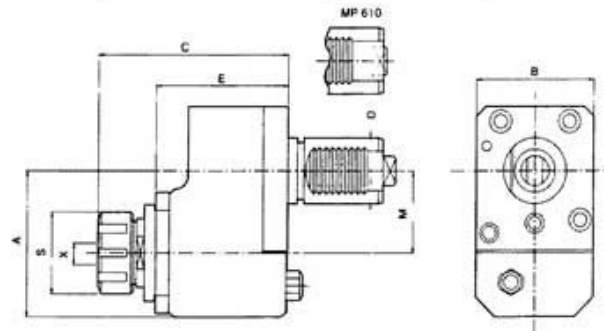
NOTE: OUTPUT ROTATION IS OPPOSITE INPUT ROTATION.
 H TYPE TENSION COMPRESSION TAPPING HEADS ALSO AVAILABLE.

OFFSET V TYPE MILLING AND DRILLING HEAD FOR MAZAK MULTIPLEX

Uses ER collets

External coolant supply

Collet is not included



EA PART NUMBER	MACHINE TYPE	MODELS	D	X CAPACITY		S	MAX RPM	A	B	C	E	M
VDI 5346100	MP410N-12D 415N-12D MP610-12D 6200-16D	MP 610	40	1-16	ER25	42	5000	89	75	118	82.5	50
VDI 5347200	MP420N-12D 620N-12D MP620-12D 6200-16D	MP 620	40	1-16	ER25	42	5000	89	80	116	81.5	50
VDI 5347232			40	2-20	ER32	50	5000	89	80	118	81.5	50

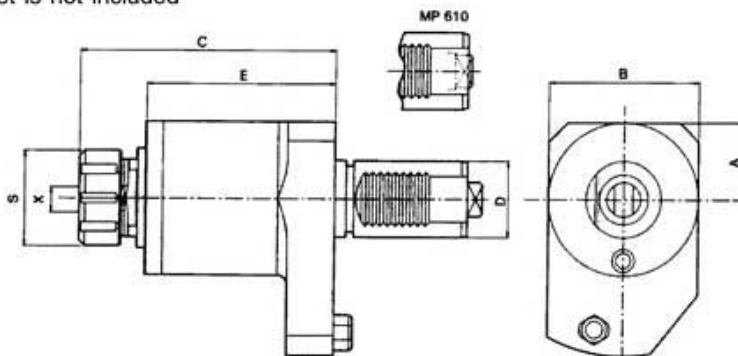
NOTE: OUTPUT ROTATION IS OPPOSITE INPUT ROTATION.
 OFFSET V TYPE TENSION COMPRESSION TAPPING HEADS ALSO AVAILABLE.

V TYPE MILLING AND DRILLING HEAD FOR MAZAK MULTIPLEX

Uses ER collets

External coolant supply

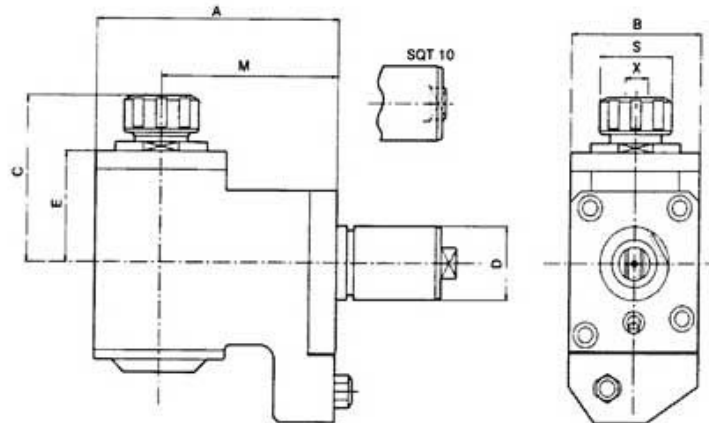
Collet is not included



EA PART NUMBER	MACHINE TYPE	MODELS	D	X CAPACITY		S	MAX RPM	A	B	C	E
VDI 5346101	MP410N-12D 415N-12D MP610-12D 6200-16D	MP 610	40	1-16	ER25	42	6000	40	75	105	74
VDI 5347202	MP420N-12D 620N-12D MP620-12D 6200-16D	MP 620	40	1-16	ER25	42	6000	40	80	105	74
VDI 5347201			40	2-20	ER32	50	6000	40	80	107	74

H TYPE MILLING AND DRILLING HEAD FOR MAZAK SUPER QUICK TURN FOR 1ST SPINDLE

Uses ER collets
 External coolant supply
 Collet is not included

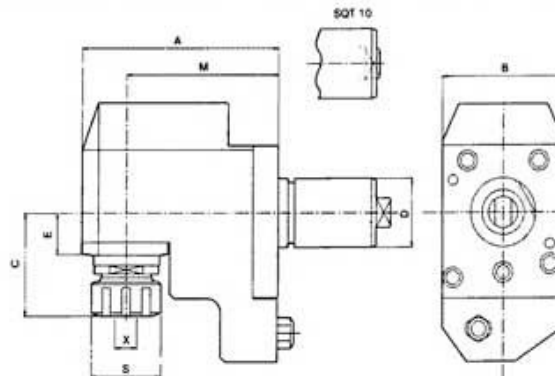


EA PART NUMBER	MACHINE TYPE	MODELS	D	X CAPACITY		S	MAX RPM	A	B	C	E	M
VDI 5352100	SQT10M-12D 15M-16D SQT200M-16D 250M-16D	SQT 10	40	1-16	ER25	42	5000	137	75	90	60	100
VDI 5362100	DQT15M-12D 18M-12D	SQT 15/18	40	1-16	ER25	42	5000	167	80	90	60	130
VDI 5362132	SQT200M-12D 250M-12D		40	2-20	ER32	50	5000	167	80	92	60	130
VDI 5382002		SQT 28/30	50	2-20	ER32	50	5000	200	90	122	85	160

NOTE: OUTPUT ROTATION IS OPPOSITE INPUT ROTATION.
 H TYPE TENSION COMPRESSION TAPPING HEADS ALSO AVAILABLE.

H TYPE BACK MILLING AND DRILLING HEAD FOR MAZAK QUICK TURN FOR 2ND SPINDLE

Uses ER collets
 External coolant supply
 Collet is not included

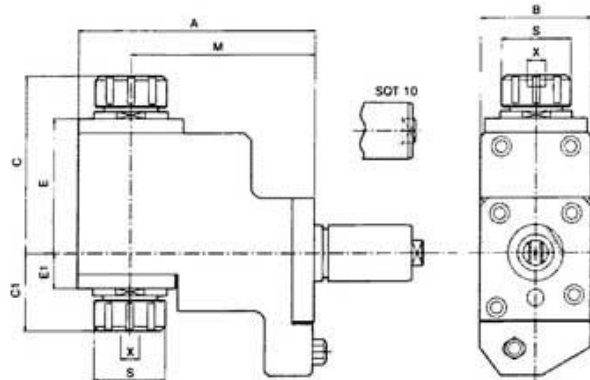


EA PART NUMBER	MACHINE TYPE	MODELS	D	X CAPACITY		S	MAX RPM	A	B	C	E	M
VDI 5354300	SQT10M-12D 15M-16D SQT200M-16D 250M-16D	SQT 10	40	1-16	ER25	42	5000	119	75	60	24.5	92
VDI 5364300	SQT15M-12D 18M-12D	SQT 15/18	40	1-16	ER25	42	5000	162	80	57	22.5	125
VDI 5364332	SQT200M-12D 250M-12D		40	2-20	ER32	50	5000	162	80	58	22.5	125
VDI 5384900		SQT 28/30	50	2-20	ER32	50	5000	197	90	81	49	160

NOTE: OUTPUT ROTATION IS OPPOSITE INPUT ROTATION.
 H TYPE BACK TENSION COMPRESSION TAPPING HEADS ALSO AVAILABLE.

H TYPE MILLING AND DRILLING HEAD FOR MAZAK SUPER QUICK TURN FOR 1ST AND 2ND SPINDLE

Uses ER collets
 External coolant supply
 Collet is not included

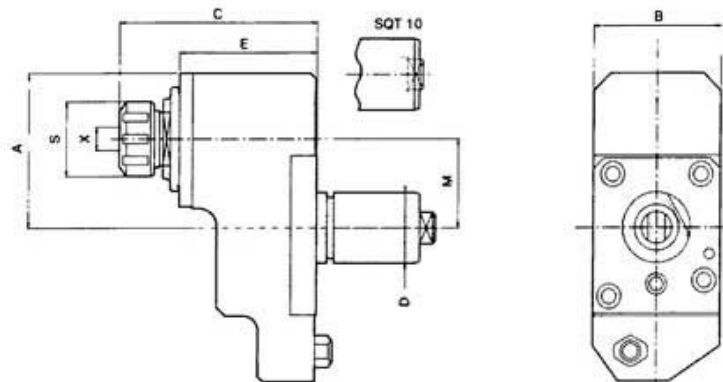


EA PART NUMBER	MACHINE TYPE	MODELS	D	X CAPACITY	S	MAX RPM	A	B	C	C1	E	E1	M
VDI 5352111	SQT10M-12D 15M-16D SQT200M-16D 250M-16D	SQT 10	40	1ST ER25 2ND ER20	42 35	4000	130	75	103	77.5	37	16	100
VDI 536411	SQT15M-12D 18M-12D SQT200M-12D 250M-12D	SQT 15/18	40	1-16 ER25	42	4000	167	80	119	50	89	19	130
VDI 5384666		SQT 28/30	50	2-20 ER32	50	4000	200	90	137	77	100	39.5	160

NOTE: ON ONE SIDE OF TOOL OUTPUT ROTATION IS THE SAME AS INPUT ROTATION, BUT ON THE OTHER SIDE, OUTPUT ROTATION IS OPPOSITE OF INPUT ROTATION.

OFFSET V TYPE MILLING AND DRILLING HEAD FOR MAZAK QUICK TURN

Uses ER collets
 External coolant supply
 Collet is not included

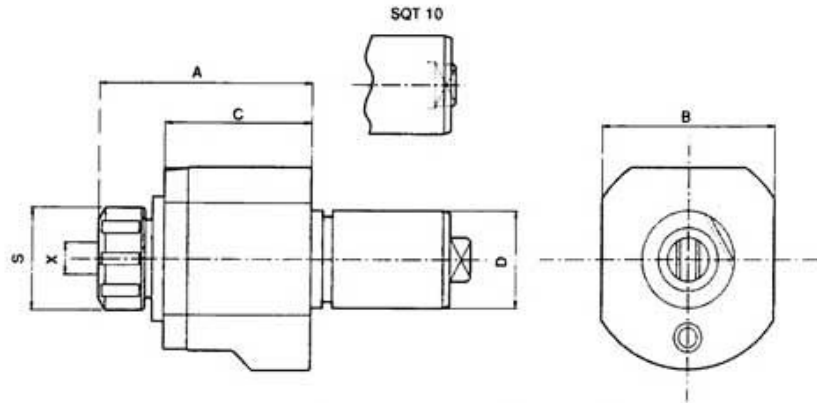


EA PART NUMBER	MACHINE TYPE	MODELS	D	X CAPACITY	S	MAX RPM	A	B	C	E	M
VDI 5352700	SQT10M-12D 15M-16D SQT200M-16D 250M-16D	SQT 10	40	1-16 ER25	42	5000	88	75	113	79	50
VDI 5362200	SQT15M-12D 18M-12D	SQT 15/18	40	1-16 ER25	42	5000	89	80	116	81.5	50
VDI 5362232	SQT200M-12D 250M-12D		40	2-20 ER32	50	5000	89	80	122	81.5	50
VDI 5382100		SQT 28/30	50	2-20 ER32	50	5000	95	96	132	91	70

NOTE: OUTPUT ROTATION IS OPPOSITE INPUT ROTATION.
 OFFSET V TYPE TENSION COMPRESSION TAPPING HEADS ALSO AVAILABLE.

V TYPE MILLING AND DRILLING HEAD FOR MAZAK SUPER QUICK TURN

Uses ER collets
 External coolant supply
 Collet is not included

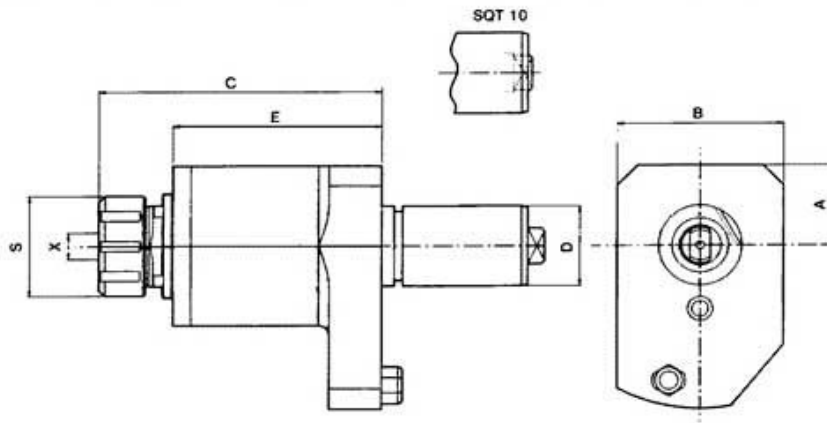


EA PART NUMBER	MACHINE TYPE	MODELS	D	X CAPACITY		S	MAX RPM	A	B	C
VDI 5352200	SQT10M-12D	SQT 10	40	1-16	ER25	42	6000	91	75	59
	15M-16D									
	SQT200M-16D									
	250M-16D									
VDI 5362218	SQT15M-12D	SQT 15/18	40	2-20	ER32	50	6000	117	80	80
	18M-12D									
	SQT200M-12D									
	250M-12D									

V TYPE TENSION COMPRESSION TAPPING HEADS ALSO AVAILABLE.

V TYPE LONG MILLING AND DRILLING HEAD FOR MAZAK SUPER QUICK TURN

Uses ER collets
 External coolant supply
 Collet is not included

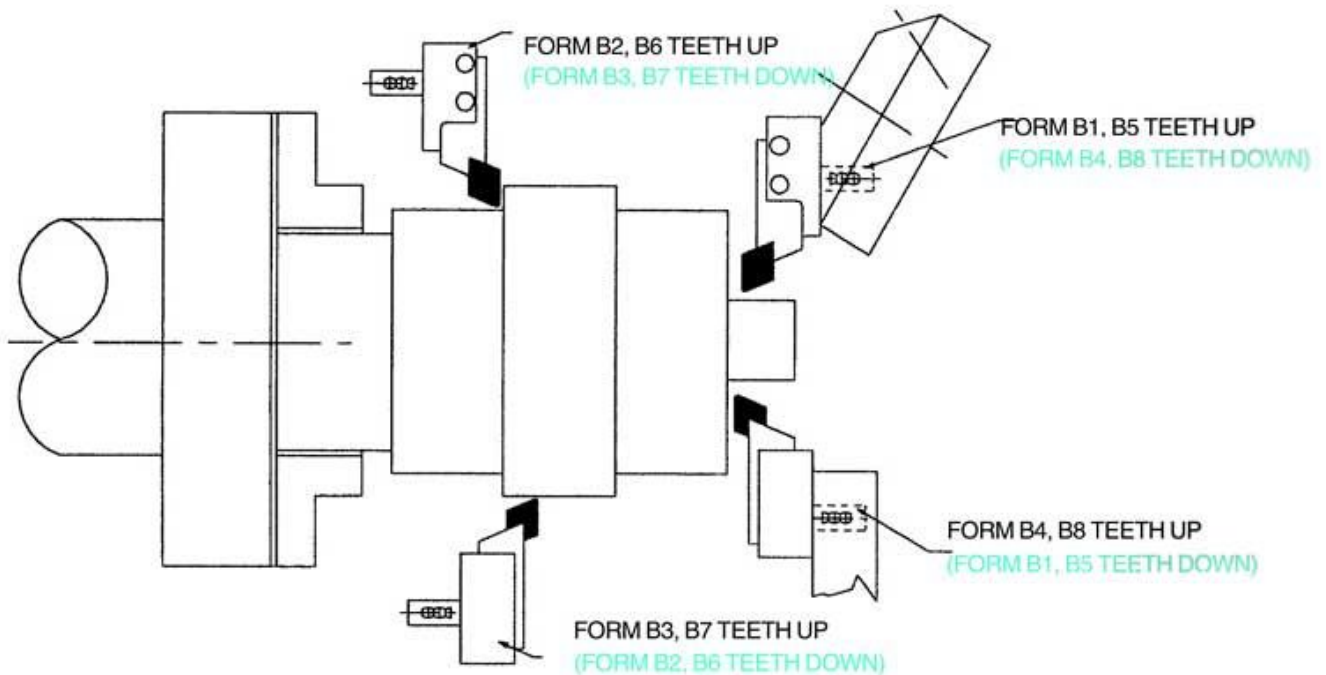
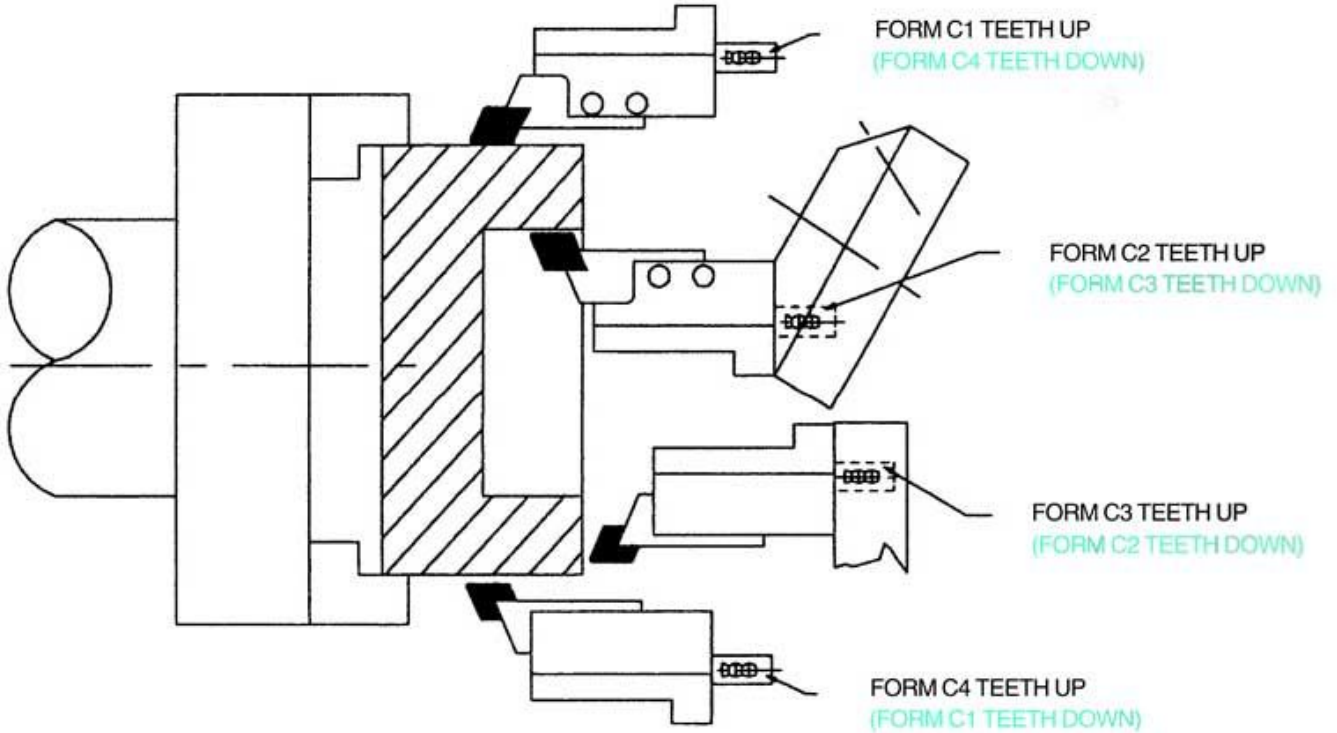


EA PART NUMBER	MACHINE TYPE	MODELS	D	X CAPACITY		S	MAX RPM	A	B	C	E
VDI 5362632-L	SQT15M-12D	SQT 15/18	40	2-20	ER32	50	6000	40	80	133.5	98.5
	18M-12D										
	SQT200M-12D										
	250M-12D										

VDI ORIENTATION CHART

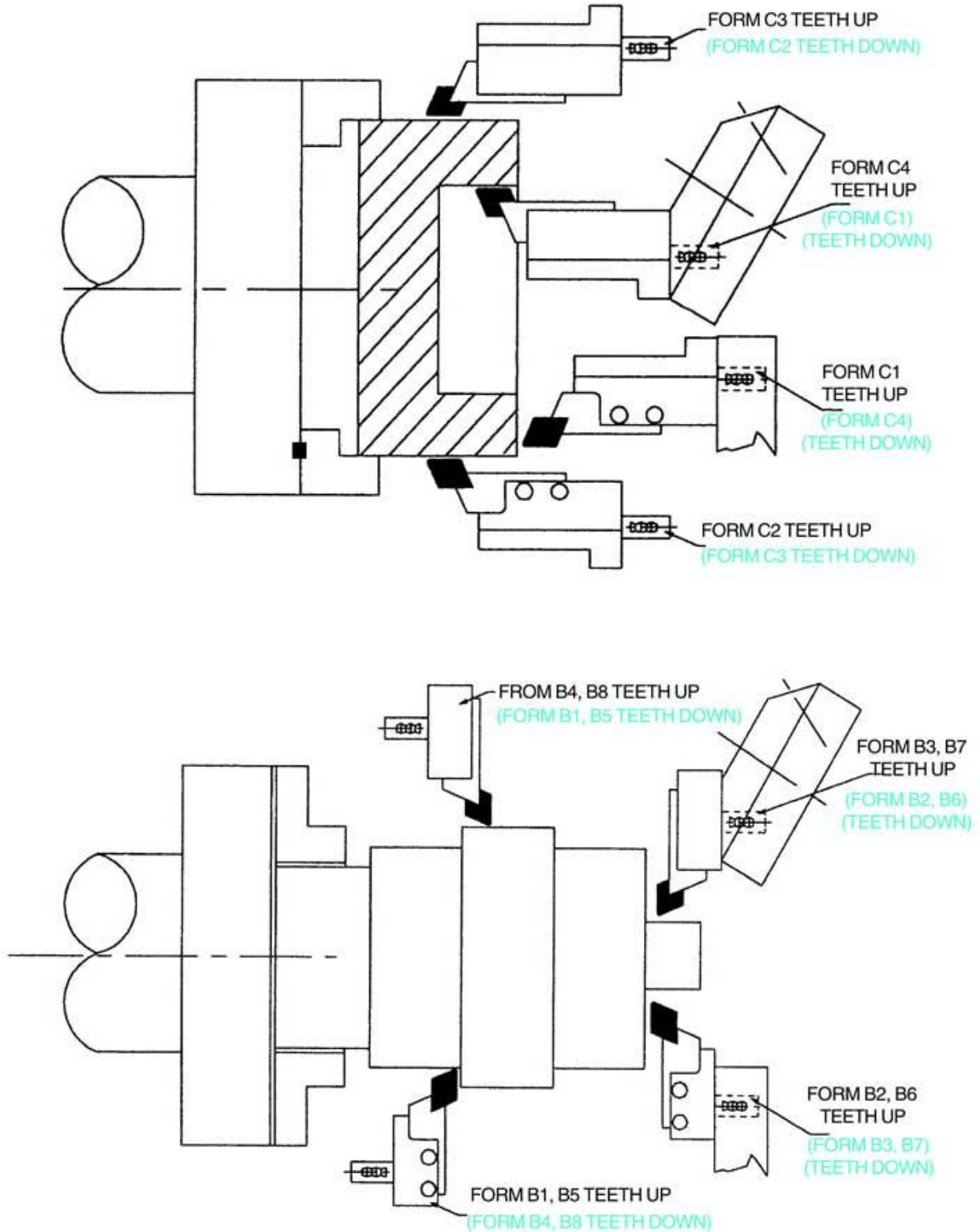
CLOCKWISE SPINDLE
 ROTATION

Tools **NOT** In Parenthesis Mounted With Tool
 Shank Teeth Up. (Tools **IN** Parenthesis Mounted
 With Tool Shank Teeth Down.) Check Your
 Turret For Which Way Your Tools Mount.

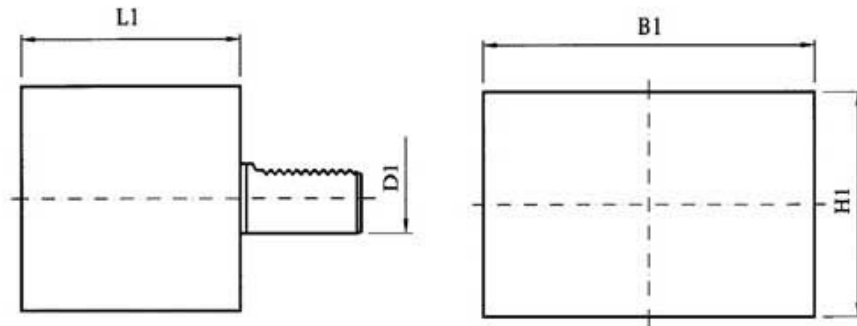


Tools **NOT** In Parenthesis Mounted With Tool Shank Teeth Up. (Tools **IN** Parenthesis Mounted With Tool Shank Teeth Down.) Check Your Turret For Which Way Your Tools Mount.

VDI ORIENTATION CHART COUNTER-CLOCKWISE SPINDLE ROTATION

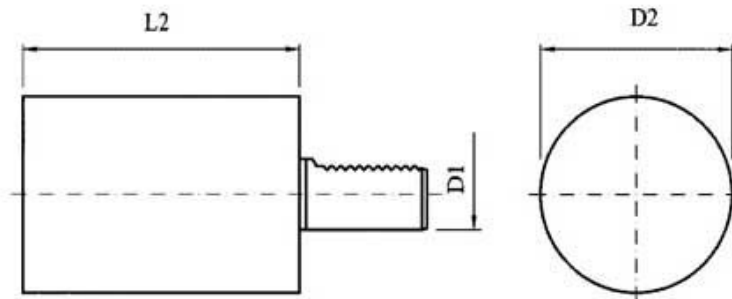


PRE-MACHINED BLANK, FORM A1



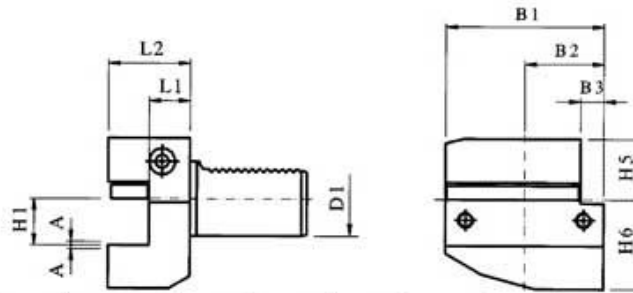
EA PART NUMBER	D1	DIN DESIGNATION	B1	H1	L1
H100.075.150	16	A1-16	78	44	44
H101.075.150	20	A1-20	100	60	65
H107.075.150	25	A1-25	100	60	75
H102.075.150	30	A1-30	130	76	85
H103.075.150	40	A1-40	151	96	100
H104.075.150	50	A1-50	160	120	125
H105.075.150	60	A1-60	165	125	160

PRE-MACHINED BLANK, FORM A2



EA PART NUMBER	D1	DIN DESIGNATION	D2	L2
H100.080.150	16	A2-16	40	60
H101.080.150	20	A2-20	50	70
H107.077.150	25	A2-25	58	80
H107.080.150	25	A2-25	58	200
H102.077.150	30	A2-30	68	100
H102.080.150	30	A2-30	68	240
H103.077.150	40	A2-40	83	120
H103.080.150	40	A2-40	83	320
H104.077.150	50	A2-50	98	135
H104.080.150	50	A2-50	98	400
H105.077.150	60	A2-60	123	150
H105.080.150	60	A2-60	123	480

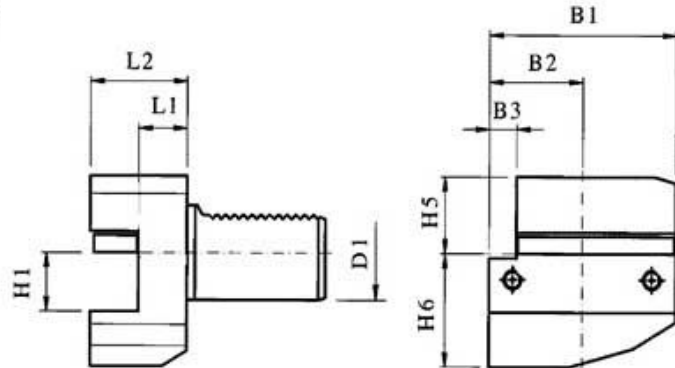
RECTANGULAR TRANSVERSE TOOL HOLDER, FORM B1 right hand, short



EA PART NUMBER	D1	H1 -0.1MM	DIN DESIGNATION	B1	B2	B3	H5	H6	L1 ±0.5	L2
H110.100.250	16	1/2	B1-16	42	23	5	20	22	13	24
H111.102.250	20	5/8	B1-20	55	30	7	25	30	16	30
H111.100.250	20	5/8	B1-20	55	30	7	25	30	26	40
*H131.100.250	20	5/8	B1-20	55	30	7	25	30	26	40
H117.100.250	25	5/8	B1-25	55	30	7	25	30	16	30
H112.100.250	30	3/4	B1-30	70	35	10	28	38	22	40
H112.102.250	30	3/4	B1-30	70	35	10	28	38	42	60
*H132.200.250	30	3/4	B1-30	70	35	10	28	35	32	50
H113.100.250	40	1	B1-40	85	42.5	12.5	32.5	48	22	44
H114.100.250	50	1-1/4	B1-50	100	50	16	35	60	30	55
H115.100.250	60	1-1/4	B1-60	125	62.5	16	42.5	62.5	30	60

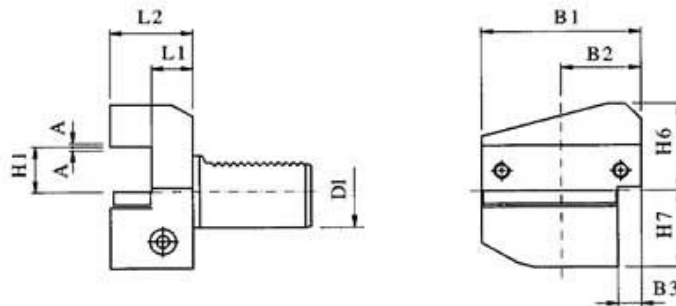
*A = 1mm +/- height adjustment

RECTANGULAR TRANSVERSE TOOL HOLDER, FORM B2 left hand, short



EA PART NUMBER	D1	DIN DESIGNATION	H1 -0.1MM	B1	B2	B3	H5	H6	L1 ±0.5	L2
H111.117.250	20	B2-20	5/8	55	30	7	25	30	16	30
H111.115.250	20	B2-20	5/8	55	30	7	25	30	26	40
H117.115.250	25	B2-25	5/8	55	30	7	25	30	16	30
H112.115.250	30	B2-30	3/4	70	35	10	28	38	22	40
H112.117.250	30	B2-30	3/4	70	35	10	28	38	42	60
H113.115.250	40	B2-40	1	85	42.5	12.5	32.5	48	22	44
H114.115.250	50	B2-50	1-1/4	100	50	16	35	60	30	55
H115.115.250	60	B2-60	1-1/4	125	62.5	16	42.5	62.5	30	60

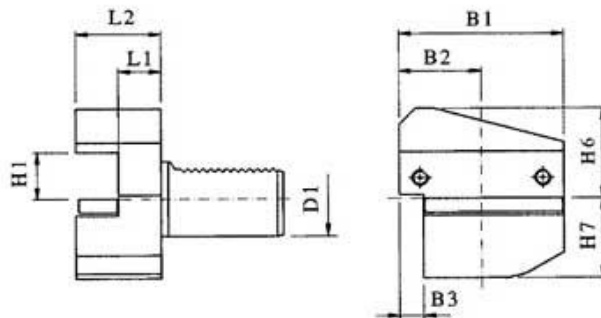
RECTANGULAR TRANSVERSE TOOL HOLDER overhead right hand, short, Form B3



EA PART NUMBER	D1	H1 ±0.1MM	DIN DESIGNATION	B1	B2	B3	H6	H5	L1 ±0.5	L2
H110.105.250	16	1/2	B3-16	42	23	5	22	20	13	24
H111.107.250	20	5/8	B3-20	55	30	7	30	25	16	30
H111.105.250	20	5/8	B3-20	55	30	7	30	25	26	40
*H131.107.250	20	5/8	B3-20	55	30	7	30	25	18	30
*H131.105.250	20	5/8	B3-20	55	30	7	30	25	26	40
H117.105.250	25	5/8	B3-25	55	30	7	30	25	16	30
H112.105.250	30	3/4	B3-30	70	35	10	38	35	22	40
H112.107.250	30	3/4	B3-30	70	35	10	38	35	42	60
H113.105.250	40	1	B3-40	85	42.5	12.5	48	42.5	22	44
H114.105.250	50	1-1/4	B3-50	100	50	16	60	50	30	55
H115.105.250	60	1-1/4	B3-60	125	62.5	16	62.5	62.5	30	60

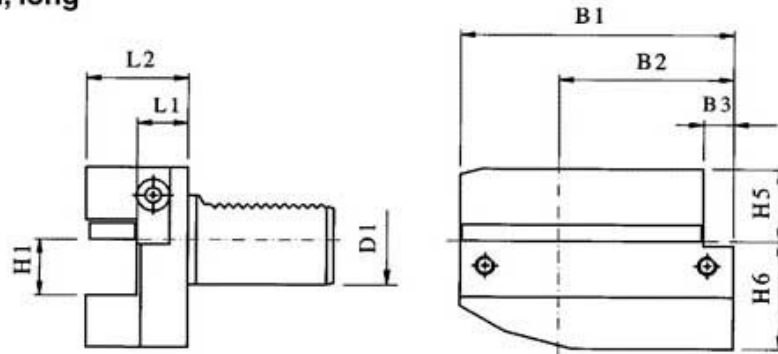
* A = 1MM± HEIGHT ADJUSTABLE

RECTANGULAR TRANSVERSE TOOL HOLDER overhead left hand, short, Form B4



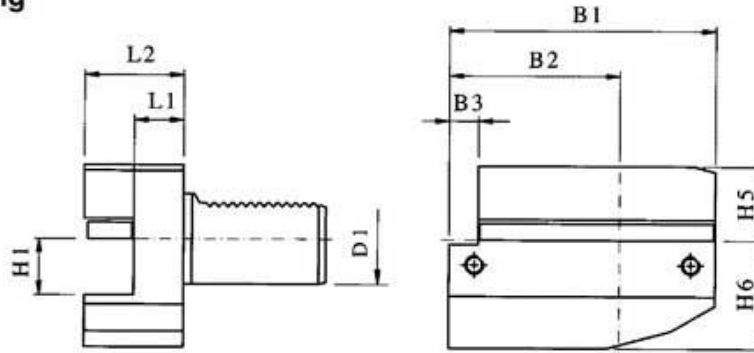
EA PART NUMBER	D1	DIN DESIGNATION	H1 ±0.1MM	B1	B2	B3	H6	H7	L1 ±0.5	L2
H111.112.250	20	B4-20	5/8	55	30	7	30	25	16	30
H111.110.250	20	B4-20	5/8	55	30	7	30	25	26	40
H117.110.250	25	B4-25	5/8	55	30	7	30	25	16	30
H112.110.250	30	B4-30	3/4	70	35	10	38	35	22	40
H112.112.250	30	B4-30	3/4	70	35	10	38	35	42	60
H113.110.250	40	B4-40	1	85	42.5	12.5	48	42.5	22	44
H114.110.250	50	B4-50	1-1/4	100	50	16	60	50	30	55
H115.110.250	60	B4-60	1-1/4	125	62.5	16	62.5	62.5	30	60

RECTANGULAR TRANSVERSE TOOL HOLDER, FORM B5 right hand, long



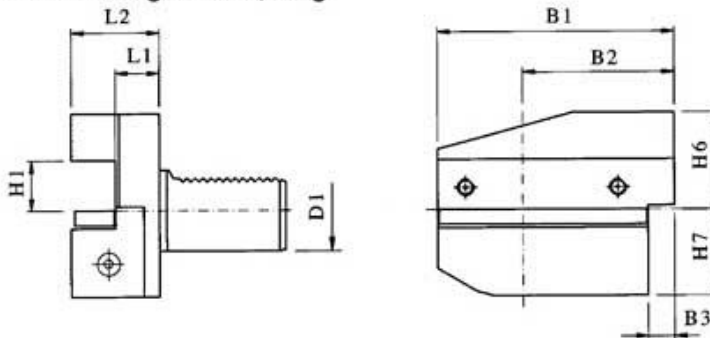
EA PART NUMBER	D1	DIN DESIGNATION	H1 -0.1MM	B1	B2	B3	H5	H6	L1 +0.5	L2
H121.102.250	20	B5-20	5/8	75	50	7	25	30	16	30
H121.100.250	20	B5-20	5/8	75	50	7	25	30	26	40
H122.100.250	30	B5-30	3/4	100	65	10	28	38	22	40
H122.102.250	30	B5-30	3/4	100	65	10	28	38	42	60
H123.100.250	40	B5-40	1	118	75.5	12.5	32.5	48	22	44
H124.100.250	50	B5-50	1-1/4	130	80	16	35	60	30	55
H125.100.250	60	B5-60	1-1/4	145	82.5	16	42.5	62.5	30	60

RECTANGULAR TRANSVERSE TOOL HOLDER, FORM B6 left hand, long



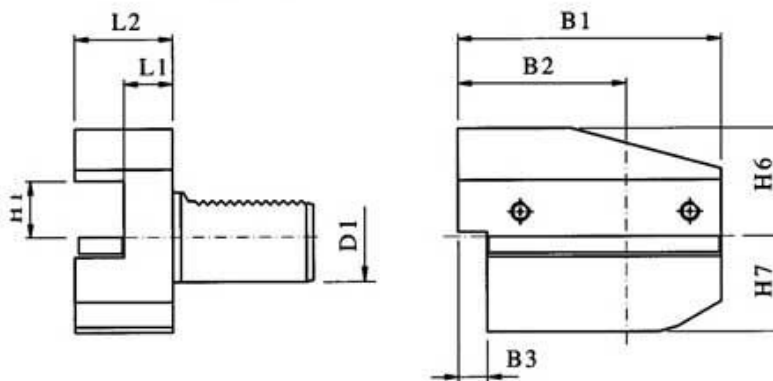
EA PART NUMBER	D1	DIN DESIGNATION	H1 -0.1MM	B1	B2	B3	H5	H6	L1 +0.5	L2
H121.117.250	20	B6-20	5/8	75	50	7	25	30	16	30
H121.115.250	20	B6-20	5/8	75	50	7	25	30	26	40
H122.115.250	30	B6-30	3/4	100	65	10	28	38	22	40
H122.117.250	30	B6-30	3/4	100	65	10	28	38	42	60
H123.115.250	40	B6-40	1	118	75.5	12.5	32.5	48	22	44
H124.115.250	50	B6-50	1-1/4	130	80	16	35	60	30	55
H125.115.250	60	B6-60	1-1/4	145	82.5	16	42.5	62.5	30	60

RECTANGULAR TRANSVERSE TOOL HOLDER, FORM B7 overhead right hand, long



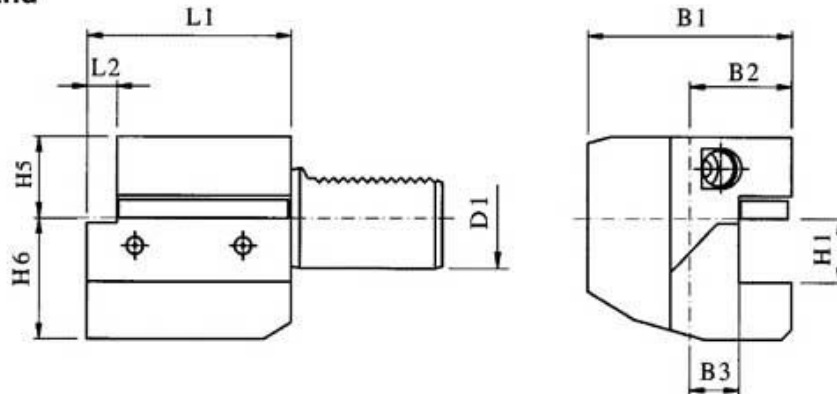
EA PART NUMBER	D1	H1 0.1MM	DIN DESIGNATION	B1	B2	B3	H6	H7	L1 ±0.1	L2
H121.107.250	20	5/8	B7-20	75	50	7	30	25	16	30
H121.105.250	20	5/8	B7-20	75	50	7	30	25	26	40
H122.105.250	30	3/4	B7-30	100	65	10	38	35	22	40
H122.107.250	30	3/4	B7-30	100	65	10	38	35	42	60
H123.105.250	40	1	B7-40	118	75.5	12.5	48	42.5	22	44
H124.105.250	50	1-1/4	B7-50	130	80	16	60	50	30	55
H125.105.250	60	1-1/4	B7-60	145	82.5	16	62.5	62.5	30	60

RECTANGULAR TRANSVERSE TOOL HOLDER, FORM B8 overhead left hand, long



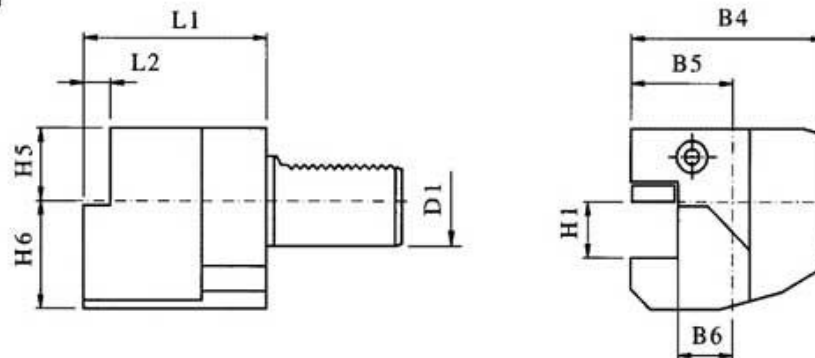
EA PART NUMBER	D1	H1 0.1MM	DIN DESIGNATION	B1	B2	B3	H6	H7	L1 ±0.5	L2
H121.112.250	20	5/8	B8-20	75	50	7	30	25	16	30
H121.110.250	20	5/8	B8-20	75	50	7	30	25	26	40
H122.110.250	30	3/4	B8-30	100	65	10	38	35	22	40
H122.112.250	30	3/4	B8-30	100	65	10	38	35	42	60
H123.110.250	40	1	B8-40	118	75.5	12.5	48	42.5	22	44
H124.110.250	50	1-1/4	B8-50	130	80	16	60	50	30	55
H125.110.250	60	1-1/4	B8-60	145	82.5	16	62.5	62.5	30	60

RECTANGULAR LENGTHWISE TOOL HOLDER, FORM C1 right hand



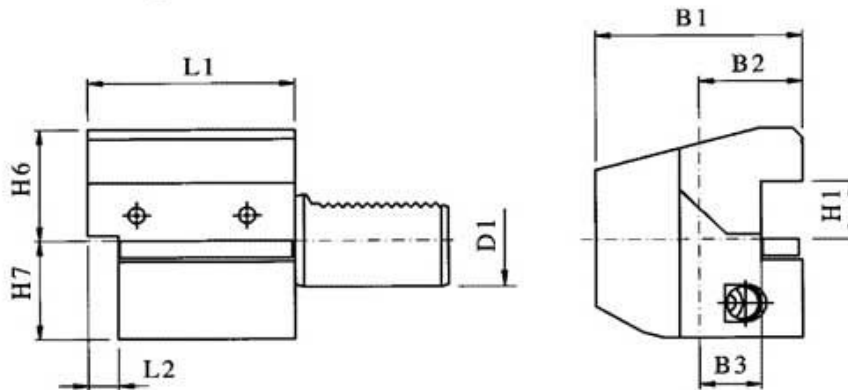
EA PART NUMBER	D1	H1 +0.1MM	DIN DESIGNATION	B1	B2	B3 +0.5	H5	H6	L1	L2
H110.120.250	16	1/2	C1-16	43	24	13	20	22	44	5
H111.122.250	20	5/8	C1-20	52	27	13	25	30	55	7
H111.120.250	20	5/8	C1-20	65	40	26	25	30	50	—
H117.120.250	25	5/8	C1-25	58	33	19	25	30	55	7
H112.120.250	30	3/4	C1-30	70	35	17	28	38	70	10
H113.120.250	40	1	C1-40	85	42.5	20.5	32.5	48	85	12.5
H114.120.250	50	1-1/4	C1-50	100	50	25.5	35	60	100	16
H115.120.250	60	1-1/4	C1-60	125	62.5	32.5	42.5	62.5	125	16

RECTANGULAR LENGTHWISE TOOL HOLDER, FORM C2 left hand



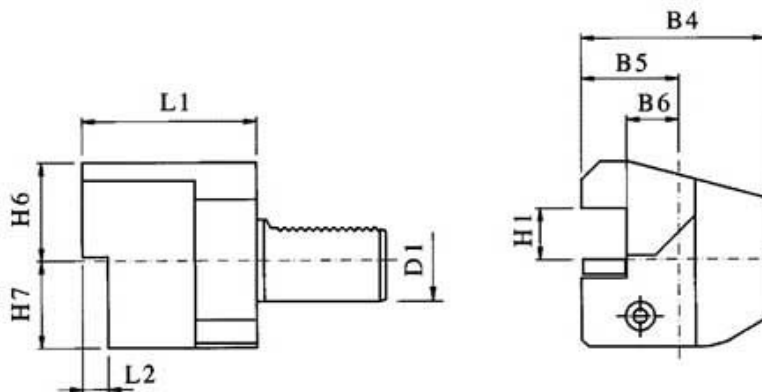
EA PART NUMBER	D1	DIN DESIGNATION	H1 -0.1MM	B4	B5	B6 +0.5	H5	H6	L1	L2
H121.125.250	20	C2-20	5/8	65	40	26	25	30	50	—
H127.125.250	25	C2-25	5/8	58	33	19	25	30	55	7
H122.125.250	30	C2-30	3/4	76	41	23	28	38	70	10
H123.125.250	40	C2-40	1	90	47.5	25.5	32.5	48	85	12.5
H124.125.250	50	C2-50	1-1/4	105	55	30.5	35	60	100	16
H125.125.250	60	C2-60	1-1/4	125	62.5	32.5	42.5	62.5	125	16

RECTANGULAR LENGTHWISE TOOL HOLDER, FORM C3 overhead right hand



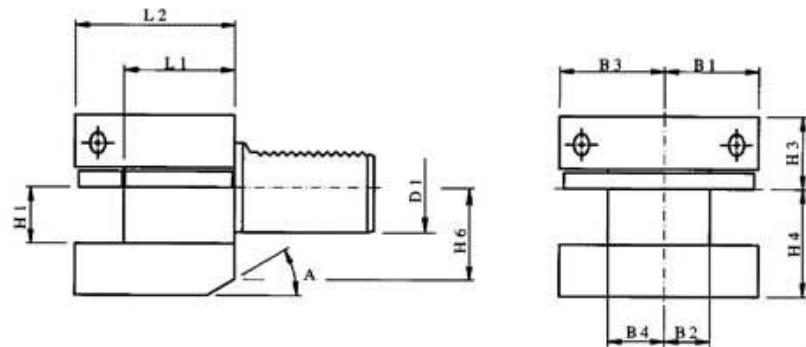
EA PART NUMBER	D1	H1 -0.1MM	DIN DESIGNATION	B1	B2	B3 +0.5	H6	H7	L1	L2
H110.125.250	16	1/2	C3-16	43	24	13	22	20	44	5
H111.127.250	20	5/8	C3-20	52	27	13	30	25	55	7
H111.125.250	20	5/8	C3-20	65	40	26	30	25	50	—
H117.125.250	25	5/8	C3-25	58	33	19	30	25	55	7
H112.125.250	30	3/4	C3-30	70	35	17	38	35	70	10
H113.125.250	40	1	C3-40	85	42.5	20.5	48	42.5	85	12.5
H114.125.250	50	1-1/4	C3-50	100	50	25.5	60	50	100	16
H115.125.250	60	1-1/4	C3-60	125	62.5	32.5	62.5	62.5	125	16

RECTANGULAR LENGTHWISE TOOL HOLDER, FORM C4 overhead left hand



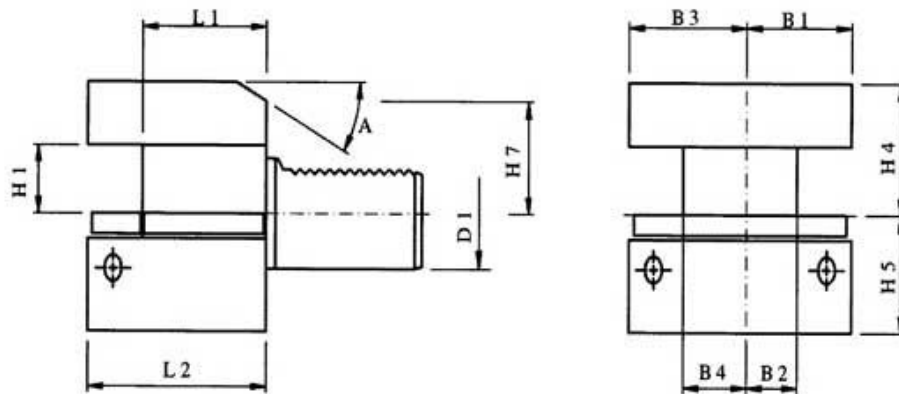
EA PART NUMBER	D1	H1 -0.1MM	DIN DESIGNATION	B4	B5	B6 +0.5	H6	H7	L1	L2
H121.120.250	20	5/8	C4-20	65	40	26	30	25	50	—
H127.120.250	25	5/8	C4-25	58	33	19	30	25	55	7
H122.120.250	30	3/4	C4-30	76	41	23	38	35	70	10
H123.120.250	40	1	C4-40	90	47.5	25.5	48	42.5	85	12.5
H124.120.250	50	1-1/4	C4-50	105	55	30.5	60	50	100	16
H125.120.250	60	1-1/4	C4-60	125	62.5	32.5	62.5	62.5	125	16

RECTANGULAR TOOL HOLDER, FORM D1 with multiple seats



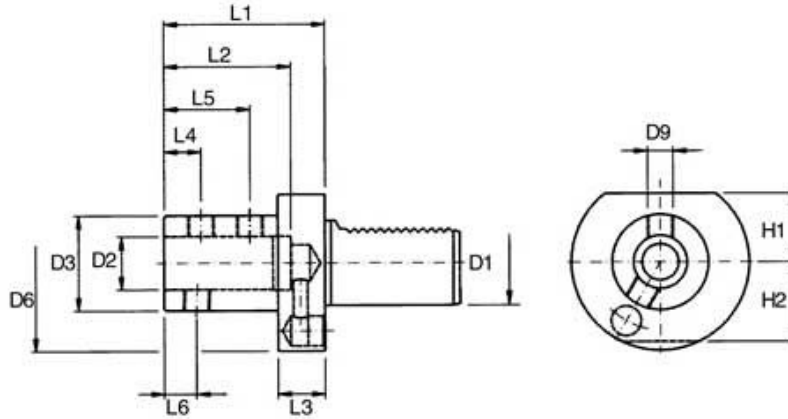
EA PART NUMBER	D1	H1 -0.1MM	DIN-DESIGNATION	B1	B2 +0.5	B3	B4 +0.5	H3	H4	H6	L1 +0.5	L2	A
H117.135.250	25	5/8	D1-25	33	19	33	19	22	30	25	34	48	30
H112.135.250	30	3/4	D1-30	35	17	41	23	28	38	30	42	60	25
H113.135.250	40	1	D1-40	42.5	20.5	47.5	25.5	32.5	48	—	50	72	—
H114.135.250	50	1-1/4	D1-50	50	25.5	55	30.5	35	60	—	60	85	—
H115.135.250	60	1-1/4	D1-60	57.5	32.5	57.5	32.5	42.5	62.5	—	85	110	—

RECTANGULAR TOOL HOLDER, FORM D2 with multiple seats, overhead



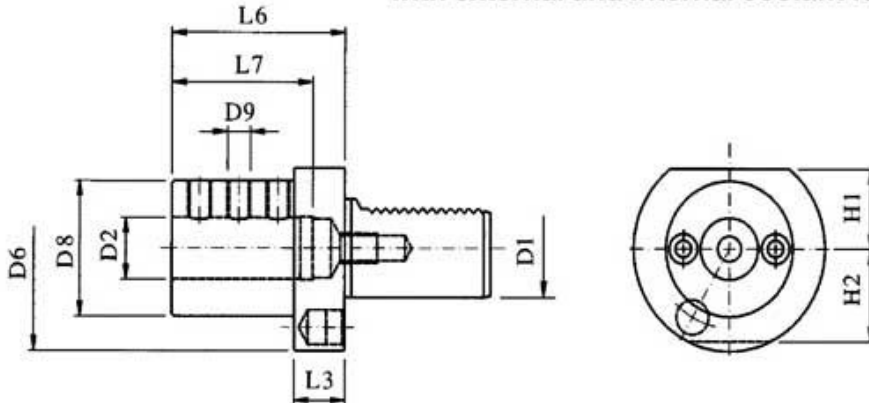
EA PART NUMBER	D1	H1 -0.1	DIN-DESIGNATION	B1	B2 +0.5	B3	B4 +0.5	H4	H5	H7	L1 +0.5	L2	A
H117.140.250	25	5/8	D2-25	33	19	33	19	30	25	25	34	48	30
H112.140.250	30	3/4	D2-30	35	17	41	23	38	35	28	42	60	25
H113.140.250	40	1	D2-40	42.5	20.5	47.5	25.5	48	42.5	—	50	72	—
H114.140.250	50	1-1/4	D2-50	50	25.5	55	30.5	60	50	—	60	85	—
H115.140.250	60	1-1/4	D2-60	57.5	32.5	57.5	32.5	62.5	62.5	—	85	100	—

TOOL HOLDER FOR CARBIDE INDEXABLE DRILL, FORM E1 with internal coolant supply



EA PART NUMBER	D1	D2 H1	DIN- DESIGNATION	D3	D6	H1	H2	L1 ±0.2	L2	L3	L4	L5	L6
H121.048.250	20	5/8	E1-20	36	50	23	23	64	51	18	17	—	17
H121.050.250	20	3/4	E1-20	40	50	23	23	67	54	18	15	35	13
H121.052.250	20	1	E1-20	45	50	23	23	71	59	18	17	40	17
H127.048.250	25	5/8	E1-25	36	58	25	25	67	54	18	15	35	17
H127.050.250	25	3/4	E1-25	40	58	25	25	67	54	18	15	35	13
H127.052.250	25	1	E1-25	45	58	25	25	71	59	18	17	40	17
H122.048.250	30	5/8	E1-30	36	68	28	30	64	51	22	17	—	17
H122.050.250	30	3/4	E1-30	40	68	28	30	67	54	22	15	35	13
H122.052.250	30	1	E1-30	45	68	28	30	71	59	22	17	40	15
H122.055.250	30	1-1/4	E1-30	52	68	28	30	75	63	22	17	44	16
H122.060.250	30	1-1/2	E1-30	60	68	28	30	87	73	22	22	50	17
H123.048.250	40	5/8	E1-40	36	83	32.5	—	64	51	22	17	—	17
H123.050.250	40	3/4	E1-40	40	83	32.5	—	67	54	22	15	35	13
H123.052.250	40	1	E1-40	45	83	32.5	—	75	59	22	17	40	15
H123.055.250	40	1-1/4	E1-40	52	83	32.5	—	75	63	22	17	44	16
H123.060.250	40	1-1/2	E1-40	60	83	32.5	—	90	73	22	22	50	17
H124.050.250	50	3/4	E1-50	40	98	35	—	67	54	30	15	35	13
H124.052.250	50	1	E1-50	45	98	35	—	80	59	30	17	40	15
H124.055.250	50	1-1/4	E1-50	52	98	35	—	80	63	30	17	44	16
H124.060.250	50	1-1/2	E1-50	60	98	35	—	90	73	30	22	50	17
H124.065.250	50	2	E1-50	70	98	35	—	100	83	30	24	60	—
H125.050.250	60	3/4	E1-60	40	123	42.5	—	80	54	30	15	35	13
H125.052.250	60	1	E1-60	45	123	42.5	—	80	59	30	17	40	15
H125.055.250	60	1-1/4	E1-60	52	123	42.5	—	80	63	30	17	44	16
H125.060.250	60	1-1/2	E1-60	60	123	42.5	—	90	73	30	22	50	17
H125.065.250	60	2	E1-60	70	123	42.5	—	100	83	30	24	60	—

BORING BAR HOLDER, FORM E2 with external and internal coolant feed

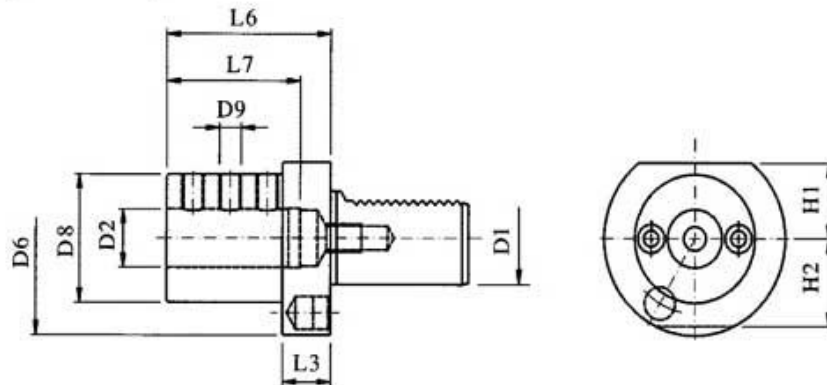


EA PART NUMBER	D1	D2 H6	DIN- DESIGNATION	D6	D8	H1	H2	L3	L6	L7
H100.015.239	16	1/4	H1-16	40	32	18	18	13	44	34
H100.015.240	16	5/16	H1-16	40	32	18	18	13	44	34
H100.015.241	16	3/8	H1-16	40	32	18	18	13	44	34
H100.015.242	16	1/2	H1-16	40	40	18	18	13	44	34
H100.015.243	16	5/8	H1-16	40	40	18	18	13	44	34
H101.010.240	20	5/16	H1-20	50	40	23	23	18	50	41
H101.010.241	20	3/8	H1-20	50	40	23	23	18	50	41
H101.010.242	20	1/2	H1-20	50	40	23	23	18	50	41
H101.010.243	20	5/8	H1-20	50	40	23	23	18	50	41
H101.010.244	20	3/4	H1-20	50	50	23	23	18	50	41
H101.010.245	20	1	H1-20	50	50	23	23	18	60	51
*H131.010.163	20	5/8	H1-20	50	—	—	—	—	40	27
H117.015.240	25	5/16	H1-25	58	40	25	25	18	50	41
H117.015.241	25	3/8	H1-25	58	40	25	25	18	50	41
H117.015.242	25	1/2	H1-25	58	40	25	25	18	50	41
H117.015.243	25	5/8	H1-25	58	40	25	25	18	50	41
H117.015.244	25	3/4	H1-25	58	58	25	25	18	50	41
H117.015.245	25	1	H1-25	58	58	25	25	18	60	51
**H112.015.240	30	5/16	H1-30	68	55	28	30	22	60	51
**H112.015.241	30	3/8	H1-30	68	55	28	30	22	60	51
**H112.015.242	30	1/2	H1-30	68	55	28	30	22	60	51
**H112.015.243	30	5/8	H1-30	68	55	28	30	22	60	51
**H112.015.244	30	3/4	H1-30	68	55	28	30	22	60	51
**H112.015.245	30	1	H1-30	68	55	28	30	22	60	51
**H112.015.246	30	1-1/4	H1-30	68	68	28	30	22	75	61
**H112.015.247	30	1-1/2	H1-30	68	68	28	30	22	75	61

* Height and side adjustable.

** Coolant supply internal/external by set screw adjustment.

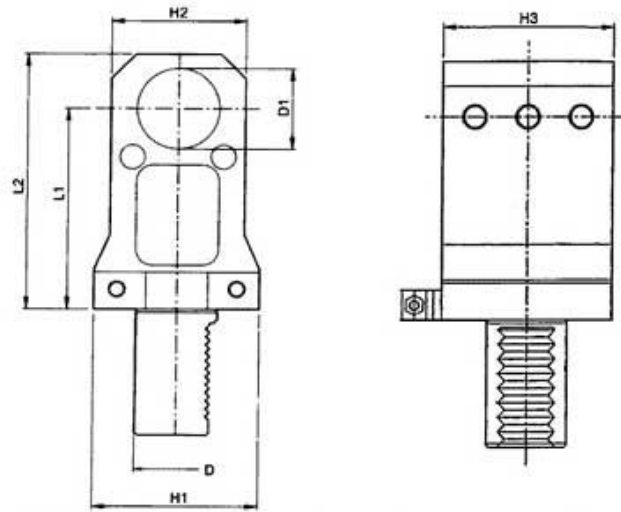
BORING BAR HOLDER, FORM E2 with external and internal coolant feed (continued)



EA PART NUMBER	D1	D2 H8	DIN- DESIGNATION	D6	D8	H1	H2	L3	L6	L7
H113.015.240	40	5/16	H1-40	83	55	32.5	—	2 2	75	61
H113.015.241	40	3/8	H1-40	83	55	32.5	—	2 2	75	61
H113.015.242	40	1/2	H1-40	83	55	32.5	—	2 2	75	61
H113.015.243	40	5/8	H1-40	83	55	32.5	—	2 2	75	61
H113.015.244	40	3/4	H1-40	83	55	32.5	—	2 2	75	61
H113.015.245	40	1	H1-40	83	55	32.5	—	2 2	75	61
H113.015.246	40	1-1/4	H1-40	83	83	32.5	—	2 2	75	61
H113.015.247	40	1-1/2	H1-40	83	83	32.5	—	2 2	75	61
H113.015.248	40	1-5/8	H1-40	83	83	32.5	—	2 0	90	76
H114.015.242	50	1/2	H1-50	98	68	35	—	3 0	90	76
H114.015.243	50	5/8	H1-50	98	68	35	—	3 0	90	76
H114.015.244	50	3/4	H1-50	98	68	35	—	3 0	90	76
H114.015.245	50	1	H1-50	98	68	35	—	3 0	90	76
H114.015.246	50	1-1/4	H1-50	98	68	35	—	3 0	90	76
H114.015.247	50	1-1/2	H1-50	98	98	35	—	3 0	90	76
H114.015.248	50	1-5/8	H1-50	98	98	35	—	3 0	90	76
H114.015.249	50	1-3/4	H1-50	98	98	35	—	3 0	100	86
H114.015.250	50	2	H1-50	98	98	35	—	3 0	100	86
H115.015.243	60	5/8	H1-60	123	68	42.5	—	3 0	90	76
H115.015.244	60	3/4	H1-60	123	68	42.5	—	3 0	90	76
H115.015.245	60	1	H1-60	123	68	42.5	—	3 0	90	76
H115.015.246	60	1-1/4	H1-60	123	68	42.5	—	3 0	90	76
H115.015.247	60	1-1/2	H1-60	123	98	42.5	—	3 0	90	76
H115.015.248	60	1-5/8	H1-60	123	98	42.5	—	3 0	90	76
H115.015.249	60	1-3/4	H1-60	123	98	42.5	—	3 0	100	86
H115.015.250	60	2	H1-60	123	98	42.5	—	3 0	100	86

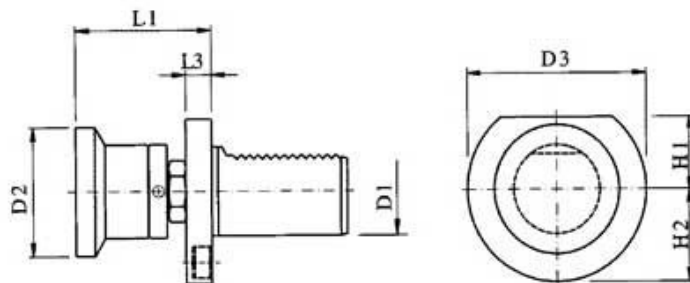
NOTE: COOLANT SUPPLY INTERNAL / EXTERNAL BY SET SCREW ADJUSTMENT.

BORING BAR HOLDER, TYPE T1 EXTERNAL, INTERNAL COOLANT SUPPLY



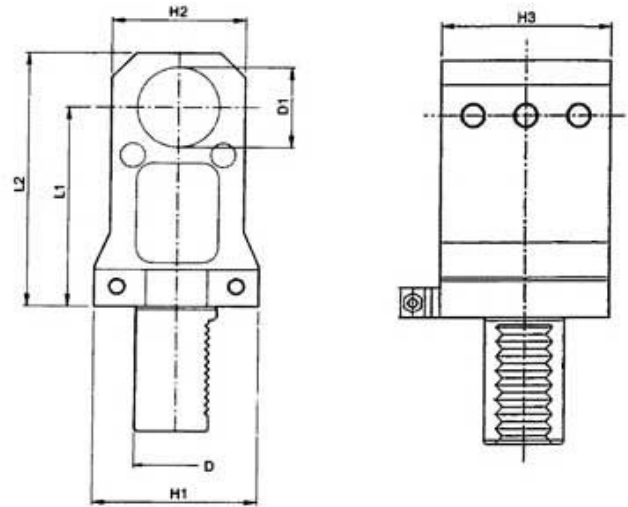
EA PART NUMBER	D	D1	H1	H2	H3	L1	L2
VDI T1-30-1.25"-65	30	1.25"	65	52	62	65	90
VDI T1-30-1.25"-85	30	1.25"	65	52	62	85	108
VDI T1-30-1.25"-100	30	1.25"	65	52	62	100	123
VDI T1-30-1.25"-120	30	1.25"	65	52	62	120	143
VDI T1-40-1.5"-85	40	1.5"	80	65	85	85	112
VDI T1-40-1.5"-100	40	1.5"	80	65	85	100	127

REVOLVING STOCK STOP



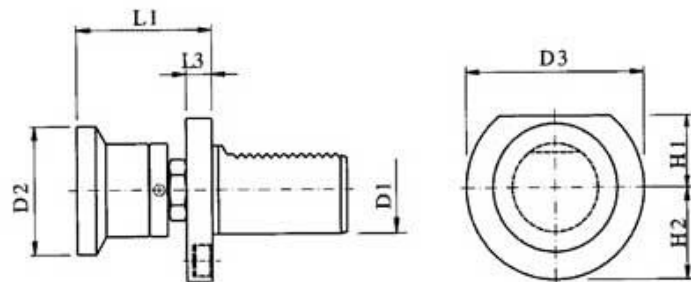
EA PART NUMBER	D1	D2	D3	H1	H2	L1	L3
H101.040.160	20	45	50	23	23	40 - 70	9
H117.045.220	25	45	50	23	23	40 - 70	9
H102.040.090	30	58	68	28	30	61 - 97	11
H102.045.100	30	26	68	28	30	62 - 95	20
H103.040.220	40	58	83	32.5	---	62 - 95	12

BORING BAR HOLDER, TYPE T1 EXTERNAL, INTERNAL COOLANT SUPPLY



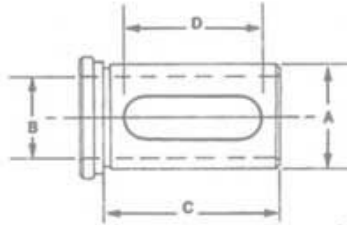
EA PART NUMBER	D	D1	H1	H2	H3	L1	L2
VDI T1-30-1.25"-65	30	1.25"	65	52	62	65	90
VDI T1-30-1.25"-85	30	1.25"	65	52	62	85	108
VDI T1-30-1.25"-100	30	1.25"	65	52	62	100	123
VDI T1-30-1.25"-120	30	1.25"	65	52	62	120	143
VDI T1-40-1.5"-85	40	1.5"	80	65	85	85	112
VDI T1-40-1.5"-100	40	1.5"	80	65	85	100	127

REVOLVING STOCK STOP



EA PART NUMBER	D1	D2	D3	H1	H2	L1	L3
H101.040.160	20	45	50	23	23	40 - 70	9
H117.045.220	25	45	50	23	23	40 - 70	9
H102.040.090	30	58	68	28	30	61 - 97	11
H102.045.100	30	26	68	28	30	62 - 95	20
H103.040.220	40	58	83	32.5	—	62 - 95	12

**ELONGATED SLOT
 ALLOWS FOR UNIVERSAL
 USE ON ALL BRANDS
 OF EQUIPMENT**



**MADE IN THE U.S.A.
 OF THRU HARDENED
 ALLOY AND PRECISION
 GROUND.**

TOOL HOLDER BUSHINGS

STYLE "CS" AND "CV"

SHORT SERIES

EDWARD ANDREWS Style "CS" and "CV" Bushings are shorter versions of our "C" Style Bushing. These bushings are designed for universal use on all CNC lathes where the use of a shorter bushing is desired. The "CS" and "CV" Style Bushings can also be used with various VDI boring bar holders. The only difference between the "CV" Style Bushing and the "CS" Style is that the length of the "CV" Bushings are in METRIC SIZES to match some common tool holders.

STYLE "CS" INCH OD - INCH ID

ALL CS BUSHINGS HAVE 1 SLOT.

EA PART NUMBER	BUSHING DIA.	STANDARD BORE SIZES STOCKED*	LENGTH UNDER HEAD	LENGTH OF SLOT
	A		C	D
EA68-10CS	3/4	1/4, 5/16, 3/8, 1/2	1-1/2	1-1/8
EA68-11CS	1	1/4, 3/8, 1/2, 5/8, 3/4	1-3/4	1-3/8
EA68-12CS	1-1/4	3/8, 1/2, 5/8, 3/4, 7/8, 1	2-1/8	1-3/4
EA68-13CS	1-1/2	3/8, 1/2, 5/8, 3/4, 7/8, 1, 1-1/4	2-1/2	2-1/8

STYLE "CV" INCH OD - INCH ID

ALL CV BUSHINGS HAVE 1 SLOT.

EA PART NUMBER	BUSHING DIA.	STANDARD BORE SIZES STOCKED*	LENGTH UNDER HEAD	LENGTH OF SLOT
	A		C	D
EA68-12CV	1-1/4	1/4, 3/8, 1/2, 5/8, 3/4, 1	2.36 (60 MM)	1.97 (50 MM)
EA68-13CV	1-1/2	3/8, 1/2, 5/8, 3/4, 1, 1-1/4	2.76 (70 MM)	2.36 (60MM)

STYLE "CV" INCH OD - METRIC ID

ALL CV BUSHINGS HAVE 1 SLOT.

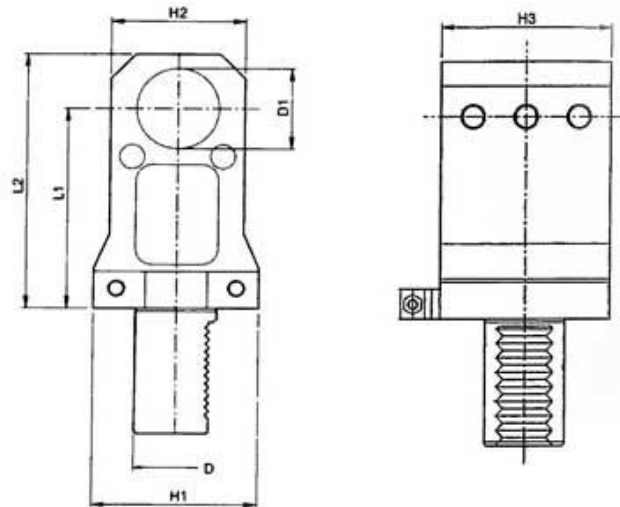
EA PART NUMBER	BUSHING DIA.	STANDARD BORE SIZES STOCKED*	LENGTH UNDER HEAD	LENGTH OF SLOT
	A		C	D
EA68-72CV	1-1/4	20 -25 MM	2.36 (60 MM)	1.97 (50 MM)
EA68-73CV	1-1/2	20 -25 -32 MM	2.76 (70 MM)	2.36 (60MM)

* Special Sizes Available.

WHEN ORDERING BUSHINGS, SPECIFY EA PART NUMBER AND BORE SIZE RE

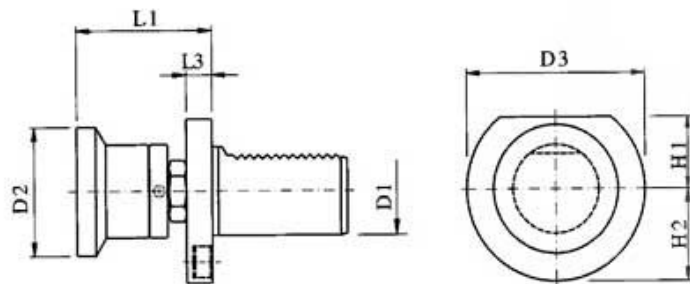
QUIRED.

BORING BAR HOLDER, TYPE T1 EXTERNAL, INTERNAL COOLANT SUPPLY



EA PART NUMBER	D	D1	H1	H2	H3	L1	L2
VDI T1-30-1.25"-65	30	1.25"	65	52	62	65	90
VDI T1-30-1.25"-85	30	1.25"	65	52	62	85	108
VDI T1-30-1.25"-100	30	1.25"	65	52	62	100	123
VDI T1-30-1.25"-120	30	1.25"	65	52	62	120	143
VDI T1-40-1.5"-85	40	1.5"	80	65	85	85	112
VDI T1-40-1.5"-100	40	1.5"	80	65	85	100	127

REVOLVING STOCK STOP

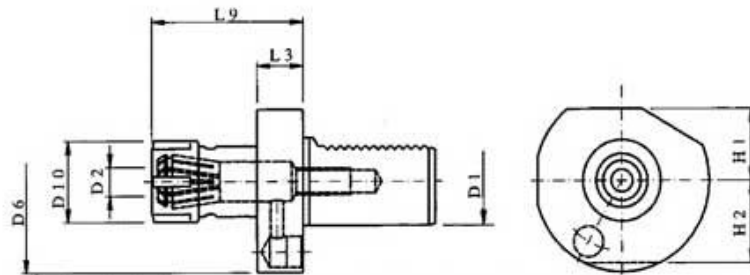


EA PART NUMBER	D1	D2	D3	H1	H2	L1	L3
H101.040.160	20	45	50	23	23	40 - 70	9
H117.045.220	25	45	50	23	23	40 - 70	9
H102.040.090	30	58	68	28	30	61 - 97	11
H102.045.100	30	26	68	28	30	62 - 95	20
H103.040.220	40	58	83	32.5	—	62 - 95	12

COLLET CHUCK, FORM E4 ER / SCHAUBLIN

Coolant supply thru collet.

Purchase sealed collet separately for tool requiring thru coolant.



EA PART NUMBER	D1	D2	DIN-DESIGNATION	D6	D10 MAX.	H1	H2	L3	L9 MAX.	COLLETS
H120.000.150	16	0.5-10	E4-16x16	40	28	18	18	14	45.5	ER 16
H120.000.220	16	1-13	E4-16x20	40	34	18	18	14	44	ER 20
H121.040.090	20	1-16	E4-20x25	50	42	23	23	18	57	ER 25
H121.035.220	20	2-20	E4-20x32	50	50	23	23	18	62	ER 32
H127.040.090	25	1-16	E4-25x25	58	42	25	25	18	57	ER 25
H127.035.220	25	2-20	E4-25x32	58	50	25	25	18	62	ER 32
H122.040.090	30	1-16	E4-30x25	68	42	28	30	22	57	ER 25
H122.035.220	30	2-20	E4-30x32	68	50	28	30	22	75	ER 32
H123.040.090	40	1-16	E4-40x25	83	42	32.5	—	2.2	63	ER 25
H123.035.220	40	2-20	E4-40x32	83	50	32.5	—	2.2	75	ER 32
H123.045.220	40	3-26	E4-40x40	83	63	32.5	—	2.2	75	ER 40
H124.035.220	50	2-20	E4-50x32	94	50	35	—	3.0	75	ER 32
H124.045.220	50	3-26	E4-50x40	94	63	35	—	3.0	63	ER 40
H125.045.220	60	3-26	E4-60x40	123	63	42.5	—	3.0	75	ER 40

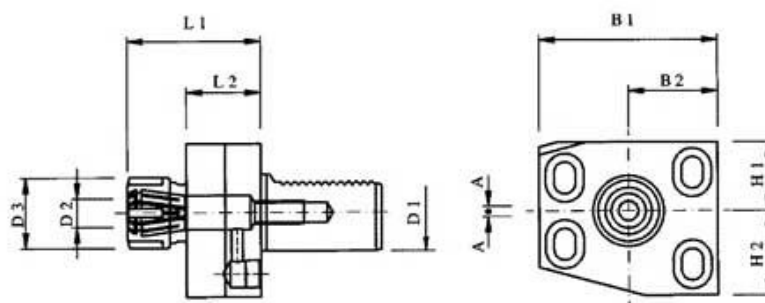
COLLET CHUCK

ER/Schaublin

with height adjustment facility

Coolant supply thru collet.

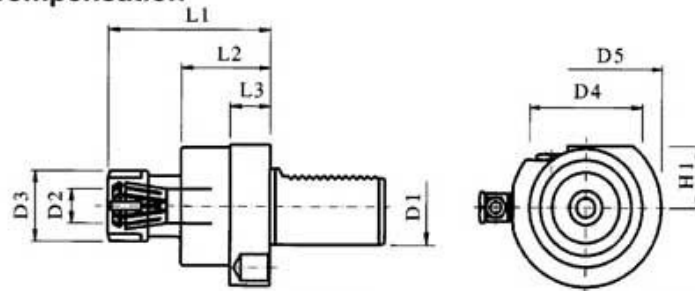
Purchase sealed collet separately for tool requiring thru coolant



EA PART NUMBER	D1	D2	DIN-DESIGNATION	D3	H1	H2	B1	B2	L1	L2	A	COLLETS
*H131.110.090	20	1-16	—	42	24	29	55	30	70	—	2	ER 25
*H137.110.090	25	1-16	—	42	24	29	55	30	70	—	2	ER 25
H132.110.090	30	1-16	—	42	27	31	35	35	56	30	2	ER 25
*H133.110.090	40	2-20	—	50	31	47	85	42.5	80	—	2	ER 32

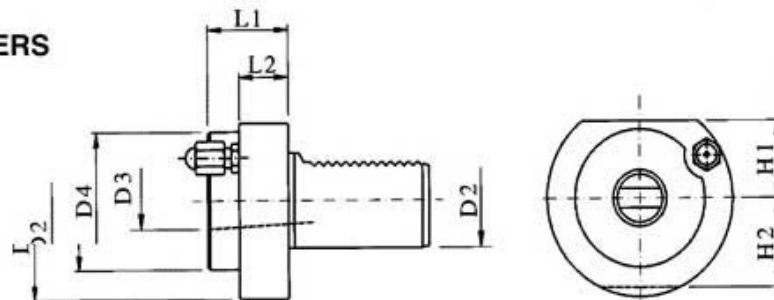
* Drawing not correspondent with tool.

COLLET CHUCK with tension and traction compensation



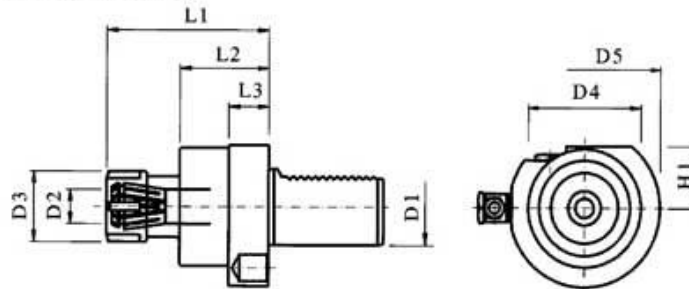
EA PART NUMBER	D1	D2	D3	D4	D5	H1	L1	L2	L3	COLLETS	TENSION / TRACTION COMP.
H121.390.220	20	0.5-10	28	45	50	23	65	40	18	ER16	6 / 1.5
H127.390.220	25	0.5-10	28	45	50	23	65	40	18	ER16	6 / 1.5
H122.390.220	30	1-16	42	62	68	28	90	54	22	ER25	8 / 2
H123.390.220	40	1-16	42	62	83	32.5	85	49	22	ER25	8 / 2
H124.390.220	50	1-16	42	62	98	35	85	49	22	ER25	8 / 2

MORSE TAPER HOLDERS



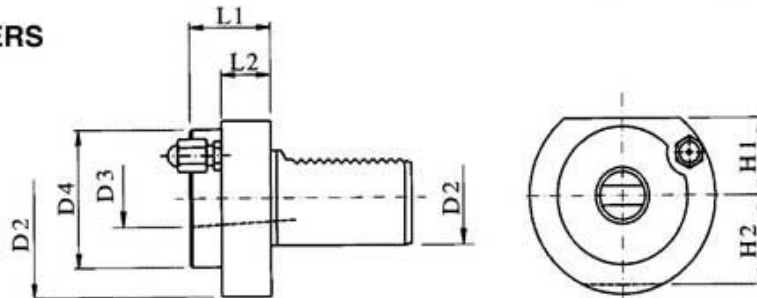
EA PART NUMBER	D1	(D3) MT	DIN DESIGNATION	D2	D4	H1	H2	L1	L2
H101.125.150	20	1	F20-MK-DK1	50	—	23	23	23	—
H101.130.220	20	2	F20-MK-DK2	50	—	23	23	87	—
H107.125.220	25	1	F25-MK-DK1	58	—	25	25	23	—
H107.130.150	25	2	F25-MK-DK2	58	—	25	25	27	—
H102.125.150	30	1	F30-MK-DK1	68	—	28	30	27	—
H102.130.150	30	2	F30-MK-DK2	68	—	28	30	27	—
H102.135.220	30	3	F30-MK-DK3	68	58	28	30	55	40
H103.130.150	40	2	F40-MK-DK2	83	55	32.5	—	36	22
H103.135.150	40	3	F40-MK-DK3	83	58	32.5	—	36	22
H103.140.150	40	4	F40-MK-DK4	83	68	32.5	—	80	22
H104.130.150	50	2	F50-MK-DK2	98	55	35	—	36	30
H104.135.150	50	3	F50-MK-DK3	98	58	35	—	36	30
H104.140.150	50	4	F50-MK-DK4	98	68	35	—	50	30
H105.130.220	60	2	F60-MK-DK2	123	55	42.5	—	36	30
H105.135.150	60	3	F60-MK-DK3	123	58	42.5	—	36	30
H105.140.150	60	4	F60-MK-DK4	123	68	42.5	—	50	30
H105.145.150	60	5	F60-MK-DK5	123	98	42.5	—	63	30

COLLET CHUCK with tension and traction compensation



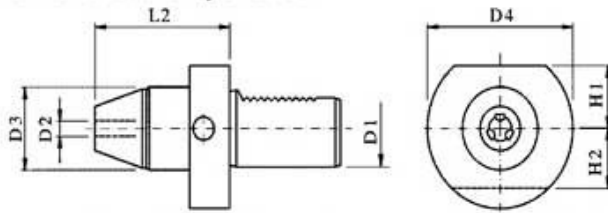
EA PART NUMBER	D1	D2	D3	D4	D5	H1	L1	L2	L3	COLLETS	TENSION / TRACTION COMP.
H121.390.220	20	0.5-10	28	45	50	23	65	40	18	ER16	6 / 1.5
H127.390.220	25	0.5-10	28	45	50	23	65	40	18	ER16	6 / 1.5
H122.390.220	30	1-16	42	62	68	28	90	54	22	ER25	8 / 2
H123.390.220	40	1-16	42	62	83	32.5	85	49	22	ER25	8 / 2
H124.390.220	50	1-16	42	62	98	35	85	49	22	ER25	8 / 2

MORSE TAPER HOLDERS



EA PART NUMBER	D1	(D3) MT	DIN DESIGNATION	D2	D4	H1	H2	L1	L2
H101.125.150	20	1	F20-MK-DK1	50	—	23	23	23	—
H101.130.220	20	2	F20-MK-DK2	50	—	23	23	87	—
H107.125.220	25	1	F25-MK-DK1	58	—	25	25	23	—
H107.130.150	25	2	F25-MK-DK2	58	—	25	25	27	—
H102.125.150	30	1	F30-MK-DK1	68	—	28	30	27	—
H102.130.150	30	2	F30-MK-DK2	68	—	28	30	27	—
H102.135.220	30	3	F30-MK-DK3	68	58	28	30	55	40
H103.130.150	40	2	F40-MK-DK2	83	55	32.5	—	36	22
H103.135.150	40	3	F40-MK-DK3	83	58	32.5	—	36	22
H103.140.150	40	4	F40-MK-DK4	83	68	32.5	—	80	22
H104.130.150	50	2	F50-MK-DK2	98	55	35	—	36	30
H104.135.150	50	3	F50-MK-DK3	98	58	35	—	36	30
H104.140.150	50	4	F50-MK-DK4	98	68	35	—	50	30
H105.130.220	60	2	F60-MK-DK2	123	55	42.5	—	36	30
H105.135.150	60	3	F60-MK-DK3	123	58	42.5	—	36	30
H105.140.150	60	4	F60-MK-DK4	123	68	42.5	—	50	30
H105.145.150	60	5	F60-MK-DK5	123	98	42.5	—	63	30

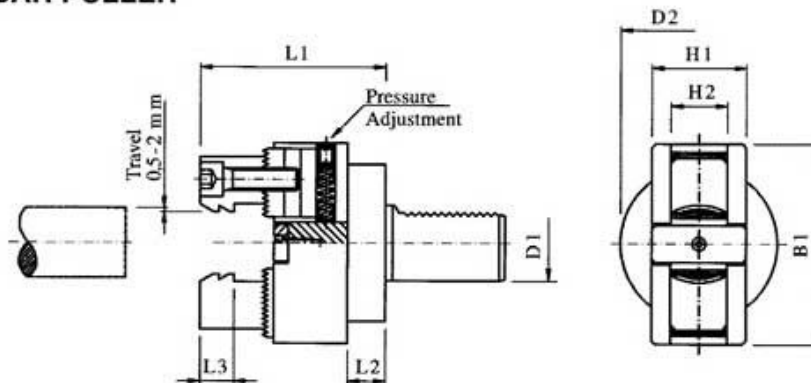
SHORT DRILLING CHUCK for reversible operation



EA PART NUMBER	D1	D2	D3	D4	H1	H2
H141.020.220	20	0 - 10	50	50	—	38
H147.020.220	25	0.5 - 8	36	58	—	68
H142.022.220	30	1 - 13	43	68	28	89
H143.022.220	40	1 - 13	43	83	32.5	85
H143.027.220	40	2.5 - 16	56	83	32.5	100
H144.025.220	50	2.5 - 16	57	98	35	105
H145.020.220	60	2.5 - 16	57	123	42.5	105

Central Coolant Supply.

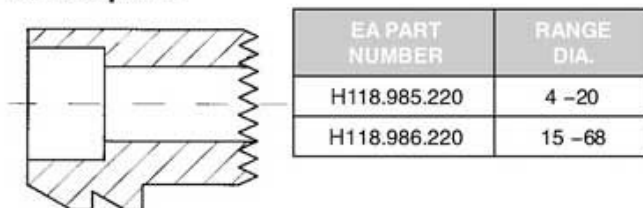
BAR PULLER



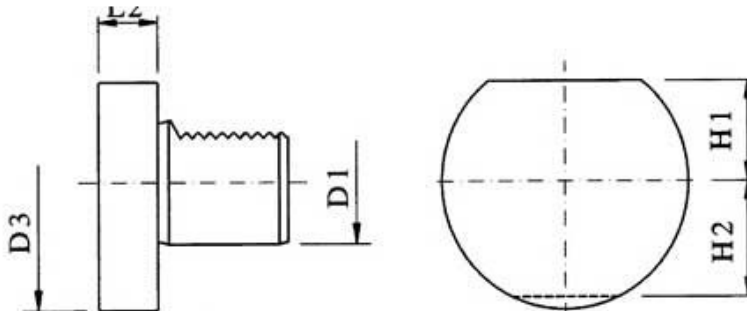
EA PART NUMBER	D1	RANGE DIA.	CLAMPING PRESSURE	L1	L2	L3	B1	D2	H1	H2
H141.200.220	20	* 4 - 68	20 - 120	89.5	16	18	106	50	50	30
H142.200.220	30	* 4 - 68	20 - 120	90	16.5	18	106	68	50	30
H143.200.220	40	* 4 - 68	20 - 120	90	16.5	18	106	83	50	30
H144.200.220	50	* 4 - 68	20 - 120	116	42.5	18	106	98	50	30

* Tool includes 1 set of jaws for range 15-68mm.

JAWS for bar puller

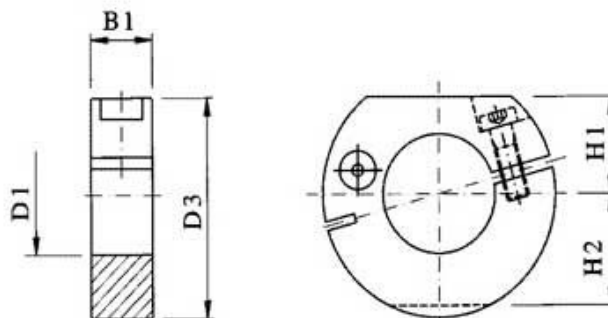


BLANKING PLUG, FORM Z2



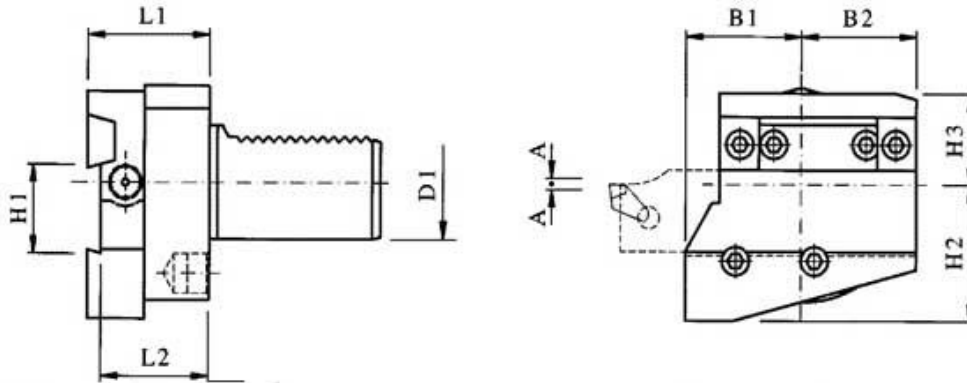
EA PART NUMBER	D1	DIN-DESIGNATION	D3	H1	H2	L2	MATERIAL
H110.500.150	16	Z2-16	40	18	23	13	STEEL
H110.500.001	16	Z2-16	40	18	23	13	PLASTIC
H111.500.150	20	Z2-20	50	23	23	16	STEEL
H111.500.001	20	Z2-20	50	23	23	16	PLASTIC
H117.500.150	25	Z2-25	58	25	25	16	STEEL
H117.500.001	25	Z2-25	58	25	25	16	PLASTIC
H112.500.150	30	Z2-30	68	28	30	16	STEEL
H112.500.001	30	Z2-30	68	28	30	16	PLASTIC
H113.500.150	40	Z2-40	83	32.5	—	20	STEEL
H113.500.001	40	Z2-40	83	32.5	—	20	PLASTIC
H114.500.150	50	Z2-50	98	35	—	20	STEEL
H114.500.001	50	Z2-50	98	35	—	20	PLASTIC
H115.500.150	60	Z2-60	123	42.5	—	20	STEEL
H115.500.001	60	Z2-60	123	42.5	—	20	PLASTIC

CLAMPING RING, FORM Z1



EA PART NUMBER	D1	DIN-DESIGNATION	D3	H1	H2	B1
H101.020.150	20	Z1-20	50	23	23	16
H102.020.150	30	Z1-30	68	28	30	22
H103.030.150	40	Z1-40	83	32.5	—	22
H104.040.150	50	Z1-50	98	35	—	30
H105.020.150	60	Z1-60	123	42.5	—	30

CUT-OFF TOOL HOLDER

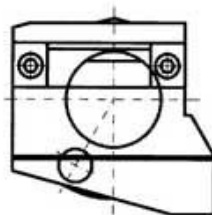


EA PART NUMBER	D1	EXECUTION	B1	B2	H1	H2	H3	L1	L2	A
H111.650.160	20	A	30	25	26	27.5	27.5	40	35	1.5
H111.655.220	20	C	30	25	26	27.5	27.5	40	35	1.5
*H117.680.220	25	A	35	35	26	38	28	44	39	2
*H117.665.220	25	C	35	35	26	38	28	44	39	2
*H112.680.220	30	A	35	35	26	38	28	44	39	2
*H112.675.220	30	B	35	35	26	38	28	44	39	2
*H112.665.220	30	C	35	35	26	38	34	44	39	2
*H112.670.220	30	D	35	35	26	38	34	44	39	2
*H113.630.220	40	A	42.5	42.5	32	48	32	44	39	2
*H113.635.220	40	B	42.5	42.5	32	48	32	44	39	2
*H113.640.220	40	C	42.5	42.5	32	48	32	44	39	2
*H113.645.220	40	D	42.5	42.5	32	48	32	44	39	2

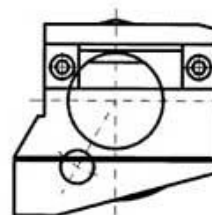
For Iscar and Coromant cutting-off tool.

* For coolant supply through the cutting-off tool.

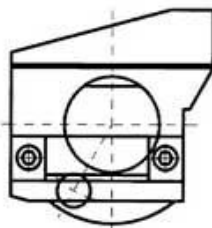
Form A



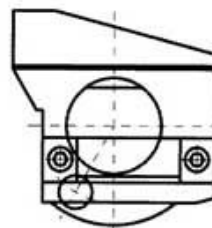
Form B



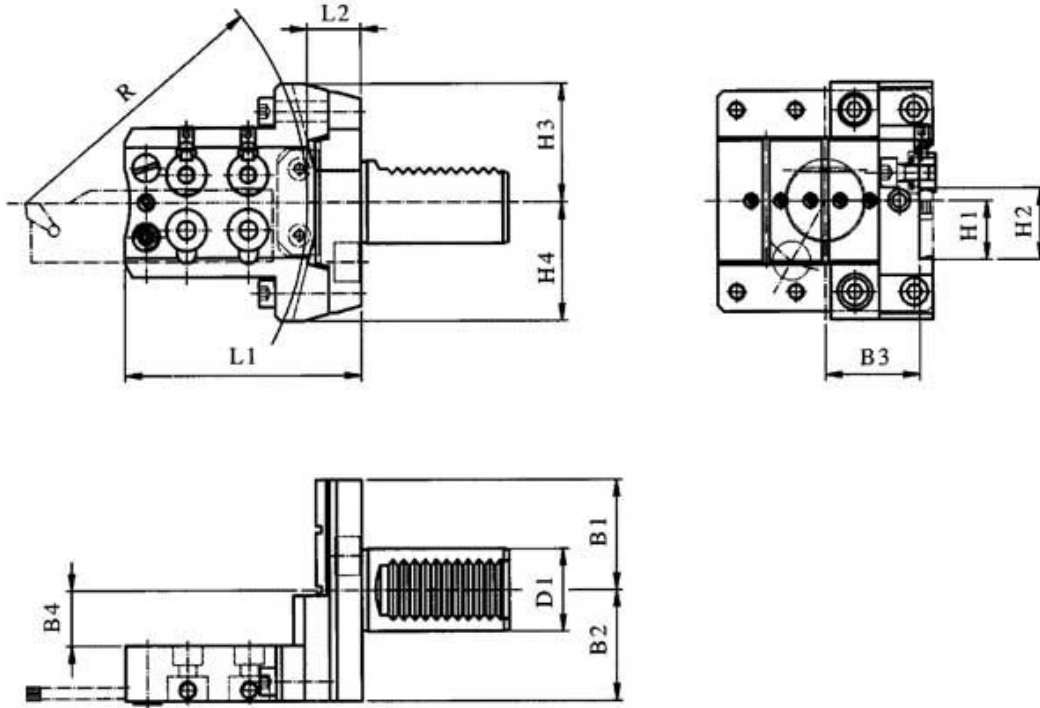
Form C



Form D



CUT-OFF TOOLHOLDER



EA PART NUMBER	D1	H1	H2	H3	H4	B1	B2	B3	B4	L1	L2	R
E7.025.037	25	21.4	26	43	43	40	40	35	20	88	20	105
E7.030.225	30	21.4	26	43	43	40	40	35	20	88	20	105
E7.030.284	30	21.4	26	43	43	40	40	35	20	110	20	127
E7.030.332	30	21.4	26	43	43	40	80	35	20	102	20	118

Subject to modification.

HN·NC | **PRECISION TOOL**

HEINER PRECISION MACHINERY CO., LTD

ADD:China, Shaanxi, Xi'an

TEL:029-81333283 FAX:029-84110636

E-MAIL:hanatool@163.com www.nc360.net

HN·NC[®]

**ZERSPANUNGSWERKZEUGE
WERKZEUGMASCHINEN ZUBEHÖR
KLEINE WERKZEUGMASCHINEN
PRÄZISIONSMESSWERKZEUGE**